

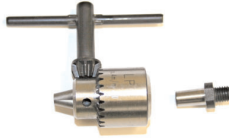
# Taylor Pneumatic Tool Company

## DRILL CHUCKS



### 1/8" Drill Chuck T-9750-C

Comes complete with key & adapter that is tapered to fit the chuck on one end and 1/4-28 threads on the other end to fit 1/4-28 threads in tools like the Taylor T-9750, T-9750EX, T-9751, T-9753 and T-9754. Key is model T-9750-B. Chuck only is T-9750-A. Adapter is T-9750-D.



### 1/4" Drill Chucks

**T-7888-A** 1/4" Drill Chuck  
Jacobs Multicraft Standard Drill Chuck. 3/8-24 threads. Key is model T-7888-B (fits T-7888-A & T-7888-A chucks). Chuck and key are model T-7888-C. This chuck can be used on forward and reversible drills. Capacity 0 to 1/4" .



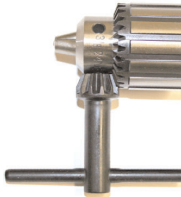
**T-9888-A** 1/4" Special Precision Drill Chuck. Machined gear. 3/8-24 threads. Key is model T-9888-B. Chuck and key are model T-9888-C. This chuck can be used on forward and reversible drills. Capacity 0 to 1/4"



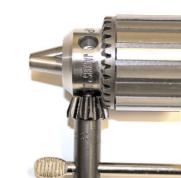
**T-7888-SPA** 1/4" Special Jacobs 1BA Drill Chuck. 3/8-24 threads. Key is model T-7888-SPB. Chuck and key are model T-7888-SPC. This chuck can be used on forward and reversible drills. Capacity 0 to 1/4" (0 to 6.5mm)



**T-9888-SPA** 1/4" Special Hi-Precision Drill Chuck. Extra High quality 1/4" chuck. 3/8-24 threads. Machined gear. Key is model T-9888-SPB. Chuck and key are model T-9888-SPC. This chuck can be used on forward and reversible drills. Capacity 0-1/4" (0 to 6.5mm).



**T-77887BASPA** 1/4" Special Jacobs 7BA Drill Chuck. 3/8-24 threads. Key is model T-77887BASPB. High quality machined gear. Chuck and key are model T-77887BASPC. This chuck can be used on forward and reversible drills. Capacity 0 to 1/4" (0-6.5mm).



**T-9888-KC** 1/4" Composite Keyless Drill Chuck. This chuck can be used on forward and reversible drills. This unique chuck makes changing bits easy. 3/8-24 threads. Capacity 0 to 1/4" (0 to 6mm).

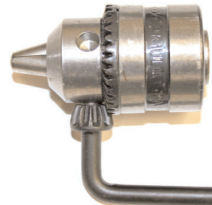


**T-9888-MKC** 1/4" Metal Keyless Drill Chuck. Heavy Duty metal chuck stands up to the heaviest use. 3/8-24 threads. This chuck can be used on forward direction drills only.

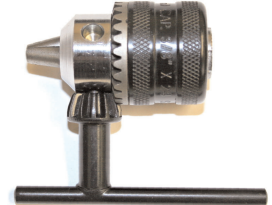


### 3/8" Drill Chucks

**T-7788-A** 3/8" Standard Jacobs Multicraft Drill Chuck. 3/8-24 threads. Key is model T-7788-B. Chuck and key are model T-7788-C. This chuck can be used on forward and reversible drills. Capacity 3/8".

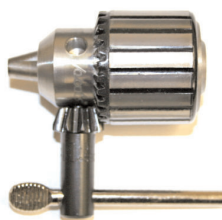


**T-7788S2-A** 3/8" Standard Jacobs Multicraft "S2" Drill Chuck. 3/8-24 threads. Key is model T-7788S2-B. Chuck and key are model T-7788S2-C. This chuck can be used on forward and reversible drills. Capacity 3/8".

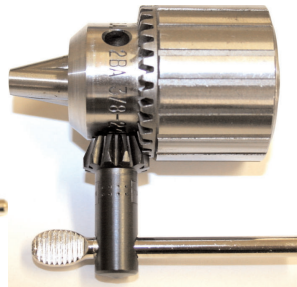


### T-7768R41BA-A 3/8" T-77882BASPA

Special Jacobs 41BA Drill Chuck. 3/8-24 threads. Key is model T-7768R41BA-B. High quality machined gear. Chuck and key are model T-7768R41BA-C. This chuck can be used on forward and reversible drills. Capacity 3/8".



3/8" Special Jacobs 2BA Drill Chuck. 3/8-24 threads. Key is model T-77882BASPB. High quality machined gear. Chuck and key are model T-77887BASPC. This chuck can be used on forward and reversible drills. Capacity 3/8".



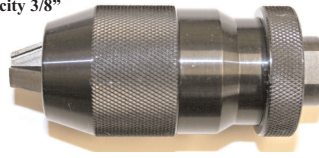
### T-7768R-SPC 3/8"

Special Hi-Precision Drill Chuck. Extra High quality 3/8" chuck. 3/8-24 threads. Machined gear. Key is model T-7768R-SPB. Chuck and key are model T-7768R-SPC. This chuck can be used on forward and reversible drills. Capacity 3/8"



### T-7768-MKC 3/8" Metal

Keyless Drill Chuck. Heavy Duty metal chuck stands up to the heaviest use. 3/8-24 threads. This chuck can be used on forward direction drills only. Capacity 3/8"



### T-7788-KC Jacobs 3/8" Composite

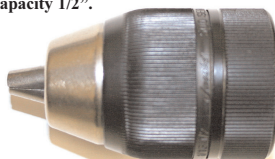
Keyless Drill Chuck. This chuck can be used on forward and reversible drills. This unique chuck makes changing bits easy. 3/8-24 threads. Capacity 0 to 3/8"



### 1/2" Drill Chucks

#### T-7788HR-KC 1/2" Jacobs

Composite Keyless Drill Chuck. This chuck can be used on forward and reversible drills. This unique chuck makes changing bit easy. 3/8-24 threads. Capacity 1/2".



#### T-7788HR-C 1/2" Standard

Jacobs Multicraft Drill Chuck. 3/8-24 threads. Key is model T-7788HR-B. Chuck and key are model T-7788HR-C. This chuck can be used on forward and reversible drills. Capacity 1.5 to 13mm.

