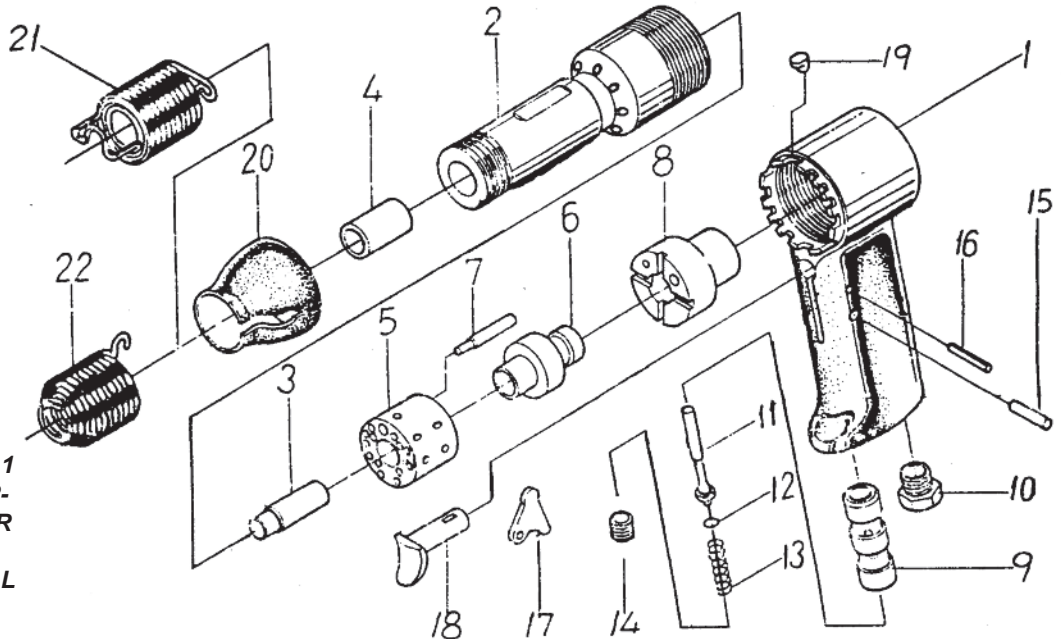


T-2X T-3X T-4X

Aircraft Riveting Hammers



For use with .401 shank rivet sets and chisels



OILING INSTRUCTIONS:

OIL AFTER EACH USE WITH 1 OR 2 TABLESPOONS OF AIR-TOOL OIL THROUGH THE AIR INLET. RUN FOR ONE SECOND TO COAT ALL INTERNAL PARTS.

USE 90 PSI MAXIMUM

Ref.#	Part #	Description	Qty.
1	234X01	Handle	1
1	234X01A	Handle Complete	1
2	2X02	2X Cylinder	1
2	3X02	3X Cylinder	1
2	4X02	4X Cylinder	1
3	2X03	2X Piston	1
3	34X03	3X Piston	1
3	34X03	4X Piston	1
4	234X04	Bushing	1
5	234X05	Valve Block	1
6	234X06	Valve	1
7	234X07	Pin	1
8	234X08	Valve Seat	1

Ref.#	Part #	Description	Qty.
9	234X09	Throttle Bushing	1
10	234X10	Inlet Bushing	1
11	234X11	Valve Stem	1
12	234X12	"O"-Ring	1
13	234X13	Spring	1
14	234X14	Plug	1
15	234X15	Pin	1
16	234X16	Pin	1
17	234X17	Assistant Lever	1
18	234X18A	Lever	1
19	234X19	Stopper Pin	1
20	234X20	Exhaust Cover	1
21	T-5120	Quick Change Spring	(Optional)
22	T-5210	Beehive Spring	1

505 N.Railroad Ave.
P.O. Box 1117
Boynton Beach, Florida 33435

SEE OUR CATALOG
at
www.taylorpneumatic.com

PH. 561-732-1111
FAX 561-731-4412
Tool Free 800-805-8665

06/08TPTCDPT
all rights reserved
COPYRIGHT 2008
final