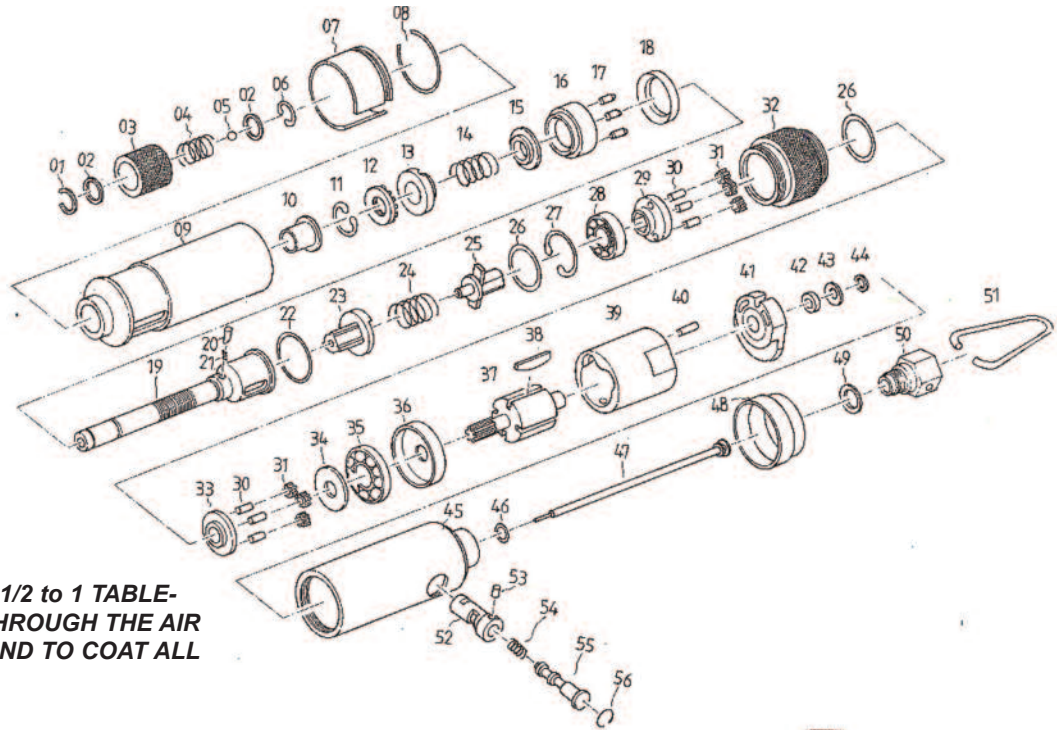


T-2430EX Straight Production Screwdriver



Adjusting Torque:
use included screw-
driver to turn left for
higher torque or
right for lower
torque



OILING INSTRUCTIONS:

**OIL AFTER EACH USE WITH 1/2 to 1 TABLE-
SPOONS OF AIRTOOL OIL THROUGH THE AIR
INLET. RUN FOR ONE SECOND TO COAT ALL
INTERNAL PARTS.**

USE 90 PSI MAXIMUM

Ref.#	Part #	Description	Qty.
1	2430EX01	Retaining Ring	1
2	02	Retaining Washer	2
3	03	Ball Retainer	1
4	04	Spring	1
5	05	Ball	1
6	06	Retaining Ring	1
7	07	Cover	1
8	08	Spring	1
9	09	Front Housing	1
10	10	Bushing	1
11	11	Spring	1
12	12	Adjusting Nut	1
13	13	Adjusting Nut Set	1
14	14	Spring	1
15	15	Spring Set	1
16	16	Spring Case End	1
17	17	Pin	3
18	18	Front Bearing Case	1
19	19	Clutch Spindle	1
20	20	Switch Pin	1
21	21	Spring	1
22	22	"O" Ring	1
23	23	Eccentric Rod	1
24	24	Spring	1
25	25	Dog	1
26	26	"O" Ring	2
27	27	Spring	1
28	28	Bearing	1
29	29	Cage	1
30	30	Gear Pin	6

Ref.#	Part #	Description	Qty.
31	2430EX31	Gear	6
32	32	Gear Case	1
33	33	Cage	1
34	34	Washer	1
35	35	Bearing	1
36	36	Front Plate	1
37	37	Rotor	1
38	38	Vanes	5
39	39	Cylinder	1
40	40	Pin	1
41	41	Rear End Plate	1
42	42	Bearing	1
43	43	Washer	1
44	44	"O" Ring	1
45	45	Handle	1
46	46	"O" Ring	1
47	47	Pin	1
48	48	Exhaust Cover	1
49	49	"O" Ring	1
50	50	Air Inlet	1
51	51	Bail	1
52	52	Reverse Bushing	1
53	53	Pin	1
54	54	Spring	1
55	55	Valve Stem	1
56	56	Spring	1

505 N. Railroad Ave.
P.O. Box 1117
Boynton Beach, Florida 33435

SEE OUR CATALOG
at
www.taylorpneumatic.com

PH. 561-732-1111
FAX 561-731-4412
Toll Free 800-805-8665