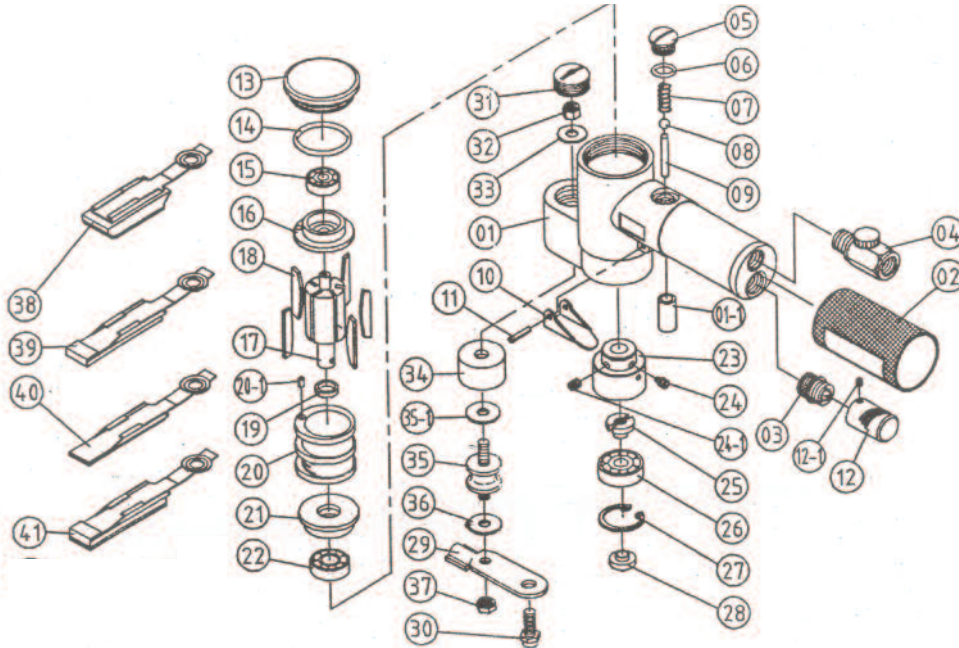


T-7265 Finger Sander



OILING INSTRUCTIONS:
OIL AFTER EACH USE
WITH 1 OR 2 TABLE-
SPOONS OF AIRTOOL OIL
THROUGH THE AIR
INLET. RUN FOR ONE
SECOND TO COAT ALL
INTERNAL PARTS.

USE 90 PSI MAXIMUM

Ref.#	Part #	Description	Qty.
1	726501	Handle	1
1-1	726501-1	Bushing	1
2	726502	Rubber Sleeve	1
3	726503	Muffler	1
4	726504	Regulator	1
5	726505	Plug	1
6	726506	"O"Ring	1
7	726507	Spring	1
8	726508	Ball	1
9	726509	Pin	1
10	726510	Lever	1
11	726511	Spring Pin	1
12	726512	Exhaust Cover	1
12-1	726512-1	Set Screw	1
13	726513	Cap	1
14	726514	"O"Ring	1
15	726515	Bearing	1
16	726516	Rear End Plate	1
17	726517	Rotor	1
18	726518	Rotor Blades (5)	1 set
19	726519	Stop Ring	1
20	726520	Cylinder	1
20-1	726520-1	Spring Pin	1
21	726521	Front End Plate	1
22	726522	Bearing	1
23	726523	Oscillator	1
24	726524	Set Screw	1

Ref.#	Part #	Description	Qty.
24-1	726524-1	Set Screw	1
25	726525	Locking Cap	1
26	726526	Bearing	1
27	726527	"C"Ring	1
28	726528	Nut	1
29	726529	Base Plate	1
30	726530	Screw	1
31	726531	Plug	1
32	726532	Nut	1
33	726533	Washer	1
34	726534	Support Guard	1
35	726535	Rubber Support Assembly	1
35-1	726535-1	Washer	1
36	726536	Washer	1
37	726537	Nut	1
38	726538	Pad(Thick, Velcro)	1
39	726539	Pad(Thin, Rubber only)	1
40	726540	Pad(Thin, Metal only)	1
41	726541	Pad(Thin, Velcro)	1

505 N. Railroad Ave.
P.O. Box 1117
Boynton Beach, Florida 33435

SEE OUR CATALOG
at
www.taylorpneumatic.com

PH. 561-732-1111
FAX 561-731-4412
Toll Free 800-805-8665

12/07 TPTCDPT
all rights reserved
COPYRIGHT 2007
final