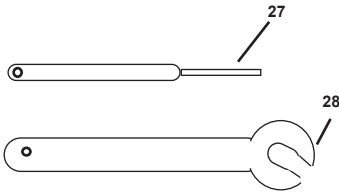
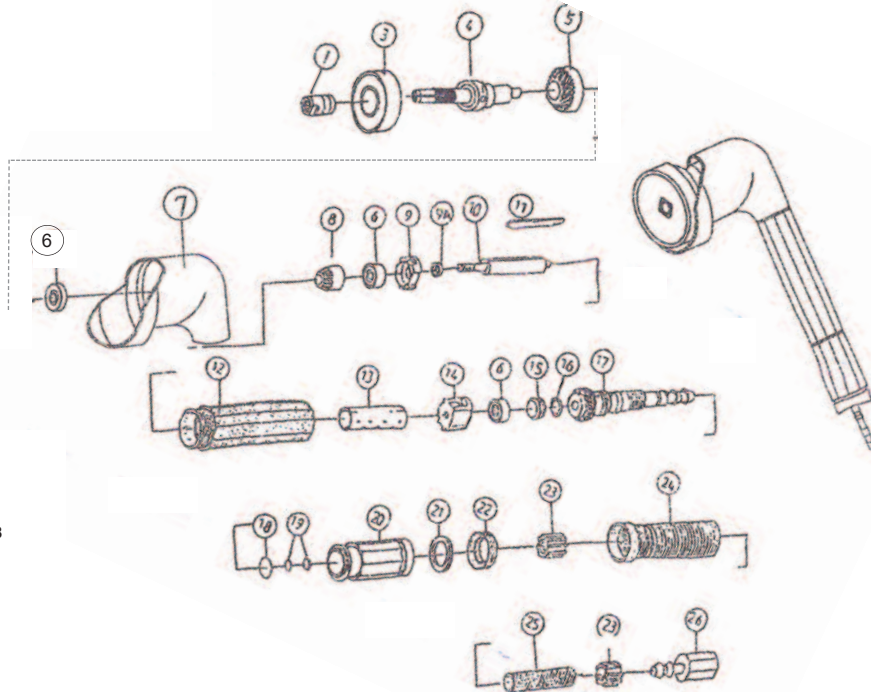


T-7459R 90 Degree Angle Pencil Die Grinder 23,500 RPM



OILING INSTRUCTIONS:
OIL AFTER EACH USE WITH 1/4 to 1/2 TABLESPOON OF AIRTOOL OIL THROUGH THE AIR INLET. RUN FOR ONE SECOND TO COAT ALL INTERNAL PARTS.



USE 90 PSI MAXIMUM

| Ref.# | Part # | Description | Qty. |
|-------|----------|-----------------------|-------|
| 1 | 7459R01 | Nut | 1 |
| 3 | 7459R03 | Bearing | 1 |
| 4 | 7459R04 | Spindle | 1 |
| 5 | 7459R05 | Gear | 1 |
| 6 | 7459R06 | Bearing | 3 |
| 7 | 7459R07 | Angle Housing | 1 |
| 8 | 7459R08 | Gear | 1 |
| 9 | 7459R09 | Front End Plate | 1 |
| 9A | 7459R09A | Spacer | 1 |
| 10 | 7459R10 | Rotor | 1 |
| 11 | 7459R11 | Rotor Blade(4 to set) | 1 set |
| 12 | 7459R12 | Housing | 1 |

| Ref.# | Part # | Description | Qty. |
|-------|---------|------------------|------|
| 13 | 7459R13 | Cylinder | 1 |
| 14 | 7459R14 | Rear End Plate | 1 |
| 15 | 7459R15 | Inlet Plate | 1 |
| 16 | 7459R16 | "O"-Ring | 1 |
| 17 | 7459R17 | Hose Adapter | 1 |
| 18 | 7459R18 | "O"-Ring | 1 |
| 19 | 7459R19 | "O"-Ring | 2 |
| 20 | 7459R20 | Air Regulator | 1 |
| 21 | 7459R21 | Muffler | 1 |
| 22 | 7459R22 | "E"-Ring | 1 |
| 23 | 7459R23 | Hose Nut | 2 |
| 24 | 7459R24 | Exhaust Hose | 1 |
| 25 | 7459R25 | Hose | 1 |
| 26 | 7459R26 | Coupler | 1 |
| 27 | 7459R27 | Spindle Lock Pin | 1 |
| 28 | 7459R28 | 7mm Wrench | 1 |

505 N. Railroad Ave.
P.O. Box 1117
Boynton Beach, Florida 33435

SEE OUR CATALOG
at
www.taylorpneumatic.com

PH. 561-732-1111
FAX 561-731-4412
Toll Free 800-805-8665

11/08 TPTCDPT
all rights reserved
COPYRIGHT 2008
final