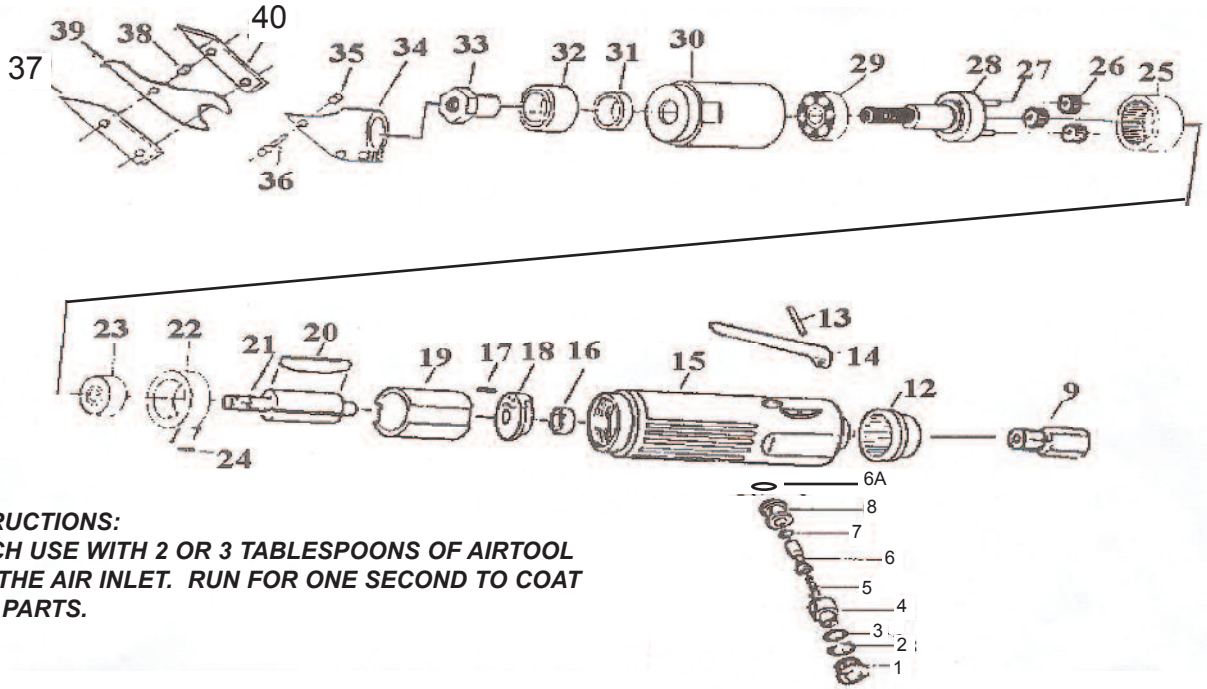


T-7701 Heavy Duty Metal Shear



OILING INSTRUCTIONS:
OIL AFTER EACH USE WITH 2 OR 3 TABLESPOONS OF AIRTOOL OIL THROUGH THE AIR INLET. RUN FOR ONE SECOND TO COAT ALL INTERNAL PARTS.

USE 90 PSI MAXIMUM

Ref.#	Part #	Description	Qty.
1	770101	Valve Screw	1
2	770102	O-Ring	1
3	770103	O-Ring	1
4	770104	Air Regulator	1
5	770105	Valve Spring	1
6	770106	Valve Stem	1
6A	770106A	O-Ring	1
7	770107	O-Ring	1
8	770108	Valve Bushing	1
9	770109	Inlet Bushing	1
12	770112	Exhaust Deflector	1
13	770113	Spring Pin	1
14	770114	Throttle Lever	1
15	770115	Motor Housing	1
16	770116	Bearing	1
17	770117	Spring Pin	1
18	770118	Rear End Plate	1
19	770119	Cylinder	1
20	770120	Rotor Blade(4pcs per set)	1 set
21	770121	Rotor	1

Ref.#	Part #	Description	Qty.
22	770122	Front Plate	1
23	770123	Bearing	1
24	770124	Spring Pin	1
25	770125	Internal Gear	2
26	770126	Planet Gear	3
27	770127	Planet Pin	3
28	770128	Planet Carrier	1
29	770129	Bearing	2
30	770130	Gear Housing	1
31	770131	Spacer	1
32	770132	Bearing	1
33	770133	Eccentric Nut	1
34	770134	Cutter-Housing	1
35	770135	Lock Nut	3
36	770136	Lock Screw	3
37	770137	Left Blade	1
38	770138	Spacer	2
39	770139	Center Blade	1
40	770140	Right Blade	1

505 N. Railroad Ave.
P.O. Box 1117
Boynton Beach, Florida 33435

SEE OUR CATALOG
at
www.taylorpneumatic.com

PH. 561-732-1111
FAX 561-731-4412
Toll Free 800-805-8665

07/08 TPTCDPT
all rights reserved
COPYRIGHT 2008
final