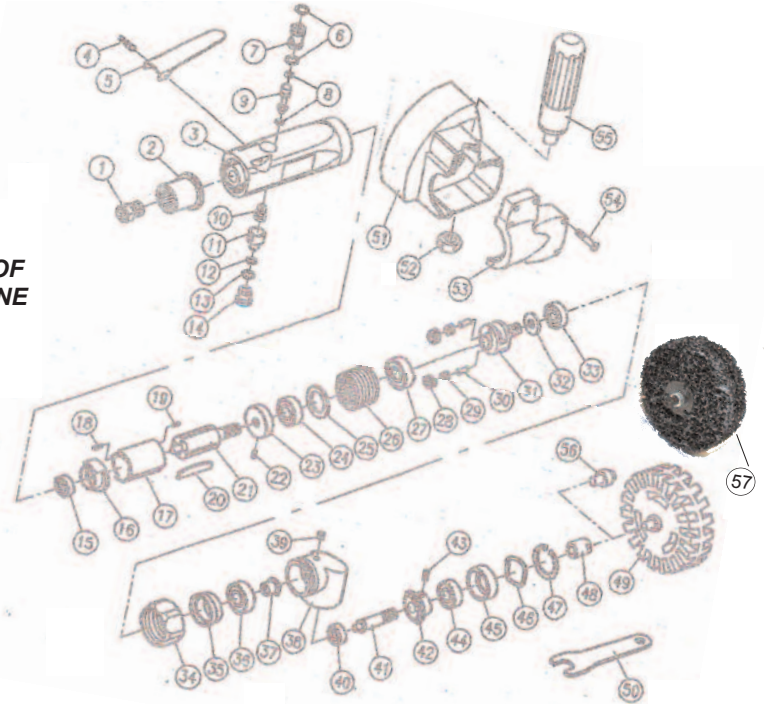


T-7712 Decal / Paint / Rust Removal Tool



OILING INSTRUCTIONS:

OIL AFTER EACH USE WITH 1/2 TO 1 TABLESPOONS OF AIRTOOL OIL THROUGH THE AIR INLET. RUN FOR ONE SECOND TO COAT ALL INTERNAL PARTS.



USE 90 PSI MAXIMUM

Ref.#	Part #	Description	Qty.
1	771201	Air Inlet	1
2	771202	Muffler	1
3	771203	Housing	1
4	771204	Pin	1
5	771205	Throttle Lever	1
6	771206	O-Ring	2
7	771207	Valve Bushing	1
8	771208	O-Ring	2
9	771209	Valve Stem	1
10	771210	Valve Spring	1
11	771211	Air Regulator	1
12	771212	O-Ring	1
13	771213	O-Ring	1
14	771214	Throttle Valve Plug	1
15	771215	Bearing	1
16	771216	End Plate	1
17	771217	Cylinder	1
18	771218	Pin	1
19	771219	Pin	1
20	771220	Rotor Blades (4)	1 set
21	771221	Rotor	1
22	771222	Pin	1
23	771223	Front End Plate	1
24	771224	Bearing	1
25	771225	Washer	1
26	771226	Internal Gear	1
27	771227	Bearing	1
28	771228	Planet Gear	2
29	771229	Bushing	2

Ref.#	Part #	Description	Qty.
30	771230	Pin	2
31	771231	Planet Cage	1
32	771232	Washer	1
33	771233	Bearing	1
34	771234	Clamp Nut	1
35	771235	Bearing	1
36	771236	Bearing	1
37	771237	Pinion Gear	1
38	771238	Angle Housing	1
39	771239	Grease Fitting	1
40	771240	Bearing	1
41	771241	Spindle	1
42	771242	Gear	1
43	771243	Set Screw	1
44	771244	Bearing	1
45	771245	Bearing Cap	1
46	771246	Wave Washer	1
47	771247	Retaining Ring	1
48	771248	Adapter	1
49	T-771249	Eraser Pad	1
50	771250	Wrench 14mm	1
51	771251	Front Cover	1
52	771252	Hex Nut	1
53	771253	Back Cover	1
54	771254L	Long Screw	2
54	771254S	Short Screw	4
55	771255	Handle	1
56	771256	Adapter	1
57	T-771257	Stripper Wheel	1

505 N. Railroad Ave.
P.O. Box 1117
Boynton Beach, Florida 33435

SEE OUR CATALOG
at
www.taylorpneumatic.com

PH. 561-732-1111
FAX 561-731-4412
Toll Free 800-805-8665

03/13TPCDBT
all rights reserved
COPYRIGHT 2013
final