

# T-7715N 5" Angle Grinder 5/8-11 Spindle

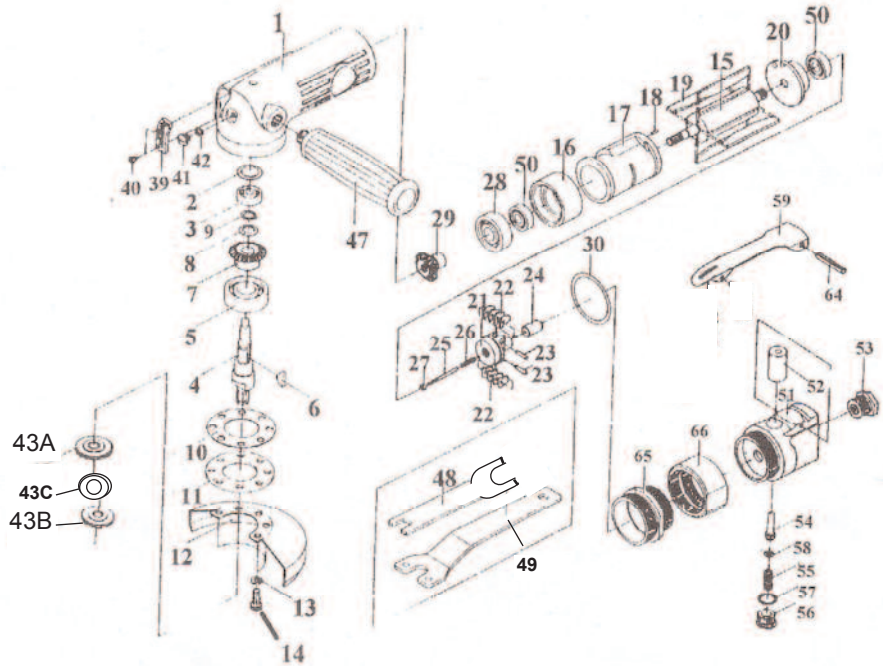


### OILING INSTRUCTIONS:

OIL AFTER EACH USE WITH 1 OR 2 TABLE-SPOONS OF AIRTOOL OIL THROUGH THE AIR INLET. RUN FOR ONE SECOND TO COAT ALL INTERNAL PARTS.

USE TYPE 27 WHEELS

SEE REVERSE SIDE OF PART SHEET FOR PROPER FLANGE NUT USE



### USE 90 PSI MAXIMUM

Ref.#	Part #	Description	Qty.
1	771401N	Motor Housing	1
2	771402N	Seal Plate	1
3	771403N	Bearing	1
4	7715N04N	Spindle	1
5	771405N	Bearing	1
6	771406N	Woodruff Key	1
7	771407N	Bevel Gear(sold as set w/#29)	1 set
8	771408N	Wave Washer	1
9	771409N	Stop Ring	1
10	771410N	Gasket	1
11	7715N11N	Retainer	1
12	771512N	5" Wheel Guard	1
13	771413N	Spring Washer	5
14	7715N14N	Pan Head Bolt	3
14A	7714N14N	Pan Head Bolt (short)	2
15	771415N	Rotor	1
16	771416N	Front End Plate	1
17	771417N	Cylinder	1
18	771418N	Spring Pin	1
19	771419N	Rotor Blade (4 per set)	1 set
20	771420N	Rear End Plate	1
21	771421N	Governor	1
22	771422N	Pendulum	8
23	771423N	Spring Pin	2
24	771424N	Plunger	1
25	771425N	Adjust Screw	1
26	771426N	Spring	1
27	771427N	Adjust Nut	1

Ref.#	Part #	Description	Qty.
28	771428N	Bearing	1
29	771429N	Bevel Pinion(sold as set w/#7)	1 set
30	771430N	O-Ring	1
39	771439N	Exhaust Deflector	1
40	771440N	Tapping Screw	2
41	771441N	Plug	1
42	771442N	O-Ring	1
43A	7715N43A	Flange Nut - 7/8" + rubber wash	1
43B	7715N43B	Flange Nut - 1"	1
43C	7715N43C	Rubber Washer	1
47	771447N	Handle	1
48	7715N48N	Wrench 10mm/14mm(double end)	1
49	7715N49N	Spanner Wrench	1
50	771450N	Bearing	2
51	771451N	Throttle Valve Housing	1
52	771452N	Bushing	1
53	771453N	Air Inlet	1
54	771454N	Valve Stem	1
55	771455N	Valve Spring	1
56	771456N	Throttle Housing	1
57	771457N	O-Ring	1
58	771458N	O-Ring	1
59	771459AN	Lever Assembly	1
64	771464N	Spring Pin	1
65	771465N	Lock Ring	1
66	771466N	Coupling Nut	1

505 N. Railroad Ave.  
P.O. Box 1117  
Boynton Beach, Florida 33435

SEE OUR CATALOG  
at  
www.taylorpneumatic.com

PH. 561-732-1111  
FAX 561-731-4412  
Toll Free 800-805-8665

06/09 TPTCDPT  
all rights reserved  
COPYRIGHT 2009  
final

# T-7715N 5" Angle Grinder 5/8-11 spindle

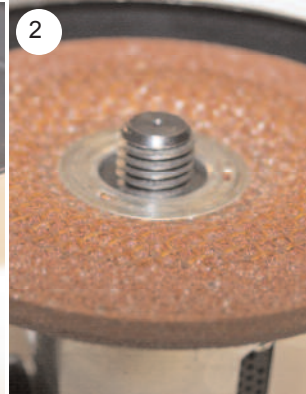


## How to install the grinding wheels on the T-7715N

**ALWAYS DISCONNECT  
FROM AIR SUPPLY BEFORE  
CHANGING WHEELS**

*To use with a 4-1/2" wheel with a 7/8" Hole:*

1. First, screw on the flange nut with the 7/8" diameter all the way to the shoulder on the spindle. Make sure the 7/8" diameter is facing out, towards the end of the spindle.
2. Next, place the wheel with the 7/8" diameter hole over the 7/8" diameter flange.
3. Screw on the next flange nut with the 1" diameter out and use the wrench to hold spindle in place and tighten flange nut with spanner wrench.



*To use with a cutoff wheel (4-1/2" x .045 x 7/8")*

Use rubber pad (provided) over top of flange nut with 7/8" flange. Rubber pad fits between the wheel and the back flange nut. Then add wheel, then flange nut as shown in step 3 above.



*To use with a 4-1/2" wheel that has a 5/8-11 threaded hub:*

1. Remove all flange nuts.
2. Screw wheel onto 5/8" spindle using wrench provided to hold spindle. Use suitable flat wrench (not provided) to tighten wheel onto spindle.



*To remove flange nut closest to tool, use wrench provided to hold spindle. With wheel removed, install flange nut with notches for spanner wrench. Use punch/pin (nail) through 1" flange into 7/8" flange. (use small holes in nuts, do not insert pin all the way) then use spanner to loosen and remove both flange nuts.*

