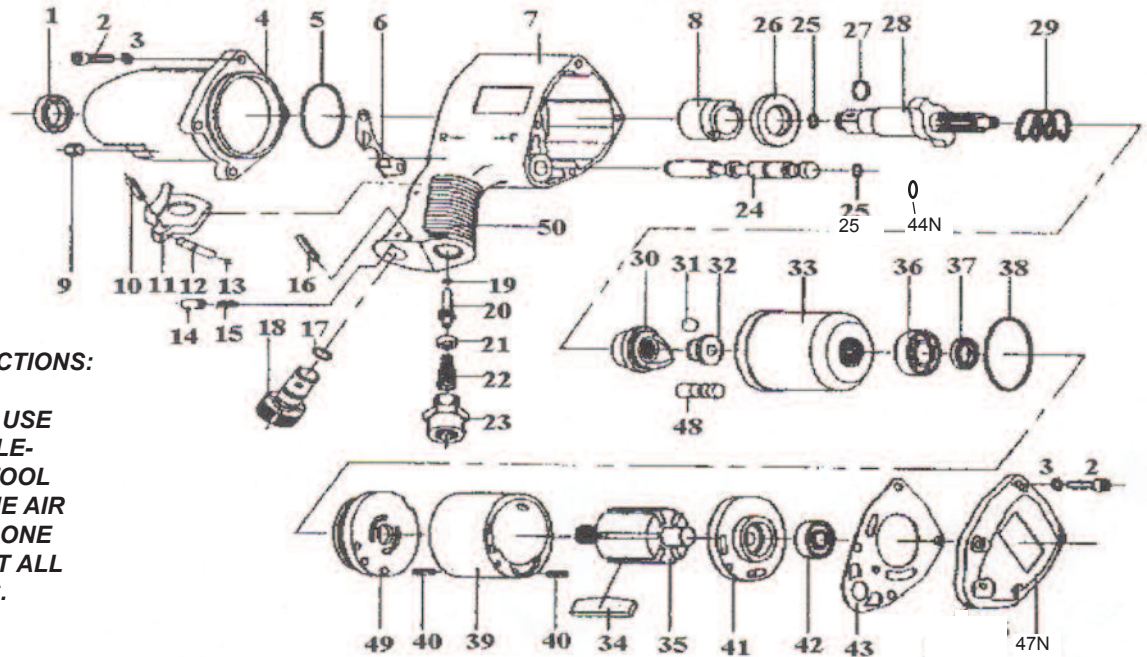


T-7745 Heavy Duty 1/2" Impact Wrench

T-7745L w/ Ext. Anvil



OILING INSTRUCTIONS:

OIL AFTER EACH USE WITH 2 OR 3 TABLE-SPOONS OF AIRTOOL OIL THROUGH THE AIR INLET. RUN FOR ONE SECOND TO COAT ALL INTERNAL PARTS.

USE 90 PSI MAXIMUM

Ref.#	Part #	Description	Qty.
1	774501	Oil Seal	1
2	774502	Screw	8
3	774503	Spring Washer	8
4	774504	Hammer Case	1
5	774505	O-Ring	1
6	774506	Exhaust Deflector	1
7	774507	Motor Housing	1
8	774508	Bushing	1
9	774509	Set Screw	1
10	774510	Spring Pin	1
11	774511	Trigger	1
12	774512	Push Pin	1
13	774513	O-Ring	1
14	774514	Pin	1
15	774515	Spring	1
16	774516	Spring Pin	1
17	774517	O-Ring	1
18	774518	Regulator Valve	1
19	774519	O-Ring	1
20	774520	Valve Stem	1
21	774521	Retainer	1
22	774522	Spring	1
23	774523	Hose Adaptor	1
24	774524	Reverse Valve	1
25	774525	O-Ring	2
26	774526	Washer	1

Ref.#	Part #	Description	Qty.
27	774527	Anvil Collar	1
28	774528	Anvil	1
28A	7745L28	2" Extended Anvil	1
29	774529	Spring	1
30	774530	Hammer Cam	1
31	774531	Ball	1
32	774532	Spindle Guide	1
33	774533	Hammer Cage	1
34	774534	Rotor Blade (6 per set)	1 set
35	774535	Rotor	1
36	774536	Bearing	1
37	774537	Oil Seal	1
38	774538	O-Ring	1
39	774539	Cylinder	1
40	774540	Spring Pin	2
41	774541	Rear End Plate	1
42	774542	Bearing	1
43	774543	Rear Gasket	1
44N	774544N	"O" Ring	1
47N	774547N	Rear Cover	1
48	774548	Hammer Pin	2
49	774549	Front End Plate	1
50	774550	Grip	1

505 N. Railroad Ave.
P.O. Box 1117
Boynton Beach, Florida 33435

SEE OUR CATALOG
at
www.taylorpneumatic.com

PH. 561-732-1111
FAX 561-731-4412
Toll Free 800-805-8665

11/08 TPTCDPT
all rights reserved
COPYRIGHT 2008
final