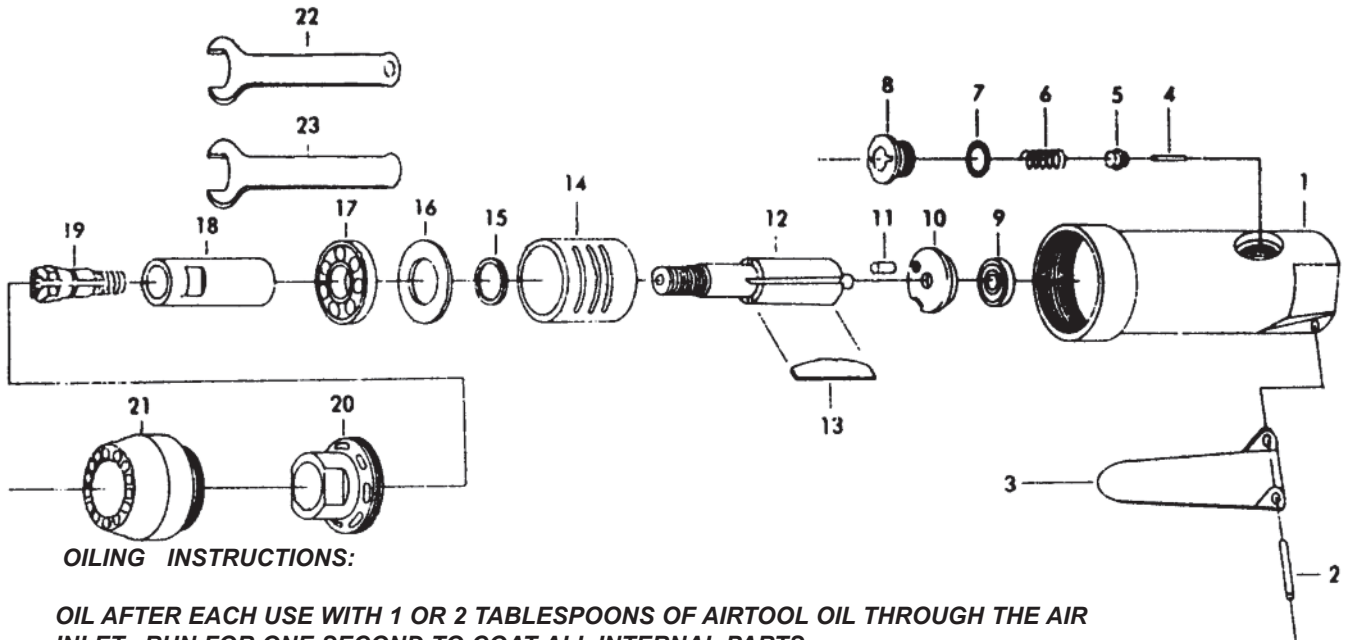


# T-7756

## 1/4" Economy Die Grinder



### USE 90 PSI MAXIMUM

Ref.#	Part #	Description	Qty.
1	775601	Housing	1
2	775602	Control Lever Pin	1
3	775603	Throttle Lever	1
4	775604	Valve Pin	1
5	775605	Valve	1
6	775606	Spring	1
7	775607	O-Ring	1
8	775608	Valve Plug	1
9	775609	Bearing	1
10	775610	Rear End Plate	1
11	775611	Pin	1
12	775612	Rotor	1

Ref.#	Part #	Description	Qty.
13	775613	Vanes (set of 4)	1 set
14	775614	Cylinder	1
15	775615	Front Plate	1
16	775616	Washer	1
17	775617	Front Bearing	1
18	775618	Chuck Casing	1
19	775619	1/4" Collet	1
19A	775619A	1/8" Collet (optional)	1
20	775620	Exhaust Deflector	1
21	775621	Guard	1
22	775622	Wrench 11mm	1
23	775623	Wrench 12mm	1

505 N. Railroad Ave.  
P.O. Box 1117  
Boynton Beach, Florida 33435

**SEE OUR CATALOG**  
at  
[www.taylorpneumatic.com](http://www.taylorpneumatic.com)

PH. 561-732-1111  
FAX 561-731-4412  
Toll Free 800-805-8665

10/07 TPTCDPT  
all rights reserved  
COPYRIGHT 2007  
final