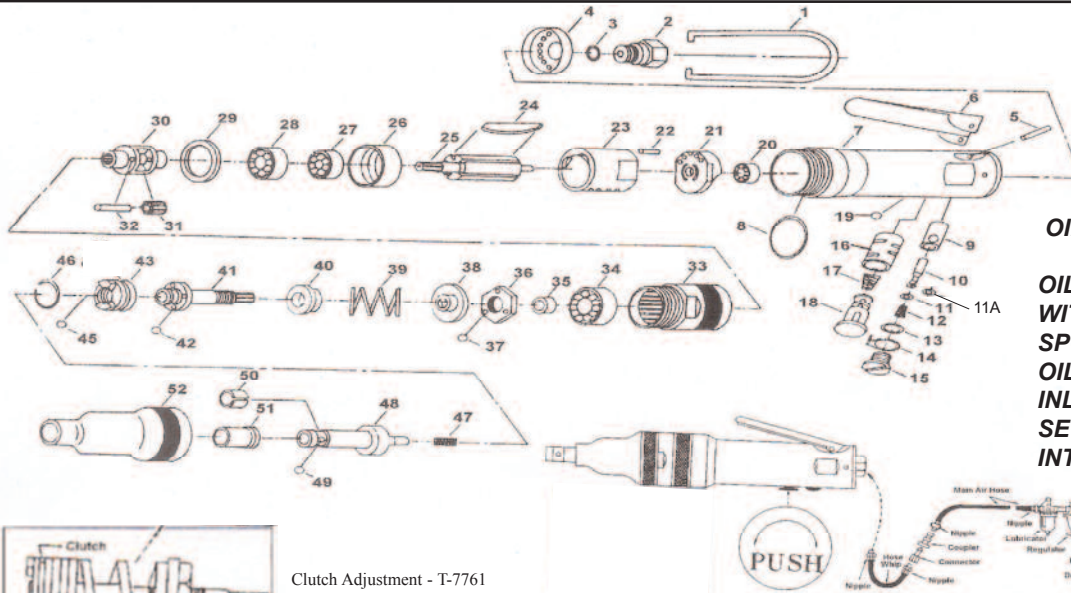
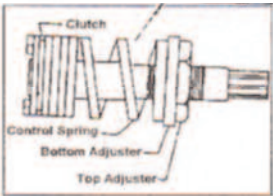


# T-7761 1/4" Straight Screwdriver



### OILING INSTRUCTIONS:

**OIL AFTER EACH USE WITH 1 OR 2 TABLE-SPOONS OF AIRTOOL OIL THROUGH THE AIR INLET. RUN FOR ONE SECOND TO COAT ALL INTERNAL PARTS.**



### Clutch Adjustment - T-7761

**ALWAYS DISCONNECT TOOL FROM AIR SUPPLY BEFORE ADJUSTING CLUTCH**

To adjust clutch, remove part #52 clutch housing (left hand threads). Clutch assembly can be removed in one unit (part # 36, 37, 38, 39, 40, 41, 42, 43, 44, 45, 46 and 47). Be careful not to loose #35 that is sandwiched between the clutch and gear housing. #47 spring is inside of #41. Two wrenches are supplied with each tool. Wrench with splined hole attaches to spline on part #41. Use the second wrench to tighten or loosen part #36, which will increase or decrease the torque output. Compressing the spring #39 will increase the torque and decompressing the spring will decrease the torque. After adjusting the clutch, reassemble to original location and reinstall part #52. Be sure that #35 & #47 are still in place when reassembling. Always keep clutch free from dirt.



## USE 90 PSI MAXIMUM

Ref.#	Part #	Description	Qty.
1	776101	Hanger	1
2	776102	Air Inlet	1
3	776103	O-Ring	1
4	776104	Exhaust Cover	1
5	776105	Lever Pin	1
6	776106	Switch Lever	1
7	776107	Rotor Case	1
8	776108	O-Ring	1
9	776109	Bushing	1
10	776110	Valve Stem	1
11	776111	O-Ring	1
11A	776111A	O-Ring	1
12	776112	Valve Spring	1
13	776113	O-Ring	1
14	776114	Reverse Retainer	1
15	776115	Valve Screw	1
16	776116	Bushing	1
17	776117	Reverse Spring	1
18	776118	Reverse Valve	1
20	776120	Bearing	1
21	776121	Rear End Plate	1
22	776122	Pin	1
23	776123	Cylinder	1
24	776124	Rotor Blade (5 per set)	1 set
25	776125	Rotor	1
26	776126	Front End Plate	1

Ref.#	Part #	Description	Qty.
27	776127	Bearing	1
28	776128	Bearing	1
29	776129	Washer	1
30	776130	Planet Cage	1
31	776131	Planet Gear	2
32	776132	Planet Pin	2
33	776133	Internal Gear	1
34	776134	Bearing	1
35	776135	Collar	1
36	776136	Adjust Nut	1
37	776137	Steel Ball	3
38	776138	Adjust Nut Seat	1
39	776139	Clutch Spring (light)	1
39	7761AH39	Clutch Spring (heavy)	1
40	776140	Clutch Spring Seat	1
41	776141	Clutch Spindle	1
42	776142	Steel Ball	14
43	776143	Dog	1
45	776145	Steel Ball	15
46	776146	Dog Retainer	1
47	776147	Center Spring	1
48	776148	Anvil	1
49	776149	Ball	1
50	776150	Steel Ball Collar	1
51	776151	Bushing	1
52	776152	Clutch Case Nut	1 set
53	776199	Wrench Set (2) (not shown)	1

505 N. Railroad Ave.  
P.O. Box 1117  
Boynton Beach, Florida 33435

**SEE OUR CATALOG**  
at  
[www.taylorpneumatic.com](http://www.taylorpneumatic.com)

PH. 561-732-1111  
FAX 561-731-4412  
Toll Free 800-805-8665

06/2013 TPTCDPT  
all rights reserved  
COPYRIGHT 2013  
final