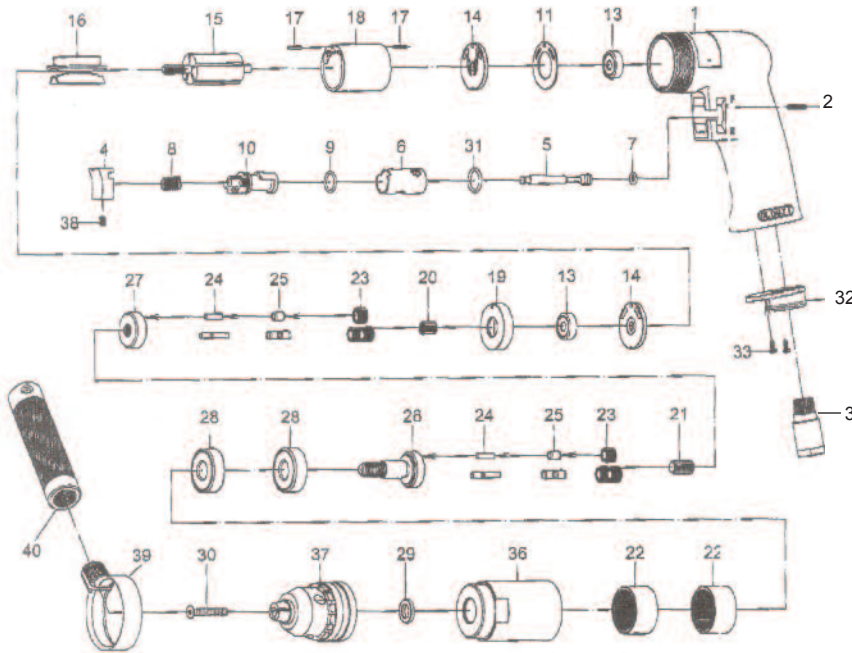


# T-7768HR 1/2" Reversible Super Duty Drill 800 RPM



### OILING INSTRUCTIONS:

**OIL AFTER EACH USE WITH 1 OR 2 TABLE-SPOONS OF AIRTOOL OIL THROUGH THE AIR INLET. RUN FOR ONE SECOND TO COAT ALL INTERNAL PARTS.**

### USE 90 PSI MAXIMUM

Ref.#	Part #	Description	Qty.
1	7768HR01	Motor Housing	1
2	7768HR02	Pin	1
3	7768HR03	Air Inlet	1
4	7768HR04	Trigger	1
5	7768HR05	Valve Stem	1
6	7768HR06	Reverse Bushing	1
7	7768HR07	"O" Ring	1
8	7768HR08	Valve Spring	1
9	7768HR09	"O" Ring	1
10	7768HR10	Reverse Lever	1
11	7768HR11	Motor Gasket	1
13	7768HR13	Bearing	2
14	7768HR14	End Plate	2
15	7768HR15	Rotor	1
16	7768HR16	Rotor Blades(5 per set)	1set
17	7768HR17	Pin	2
18	7768HR18	Cylinder	1
19	7768HR19	Spacer	1
20	7768HR20	Pinion Gear	1
21	7768HR21	Center Gear	1
22	7768HR22	Ring Gear	2
23	7768HR23	Planet Gear	6

Ref.#	Part #	Description	Qty.
24	7768HR24	Pin	6
25	7768HR25	Bushing	6
26	7768HR26	Work Spindle	1
27	7768HR27	Reduction Spindle	1
28	7768HR28	Bearing	2
29	7768HR29	Chuck Spacer	1
30	7768HR30	Chuck Screw	1
31	7768HR31	"O" Ring	1
32	7768HR32	Exhaust Diffuser	1
33	7768HR33	Screw	2
36	7768HR36	Clamp Nut	1
37	T-7788HR-A	Drill Chuck 1/2"	1
38	7768HR38	Set Screw	1
39	7768HR39	Retainer	1
40	7768HR40	Handle	1
41	T-7788HR-B	Drill Chuck Key (not shown)	1

505 N. Railroad Ave.  
P.O. Box 1117  
Boynton Beach, Florida 33435

**SEE OUR CATALOG**

at

[www.taylorpneumatic.com](http://www.taylorpneumatic.com)

PH. 561-732-1111

FAX 561-731-4412

Toll Free 800-805-8665

11/08 TPTCDPT  
all rights reserved  
COPYRIGHT 2008  
final