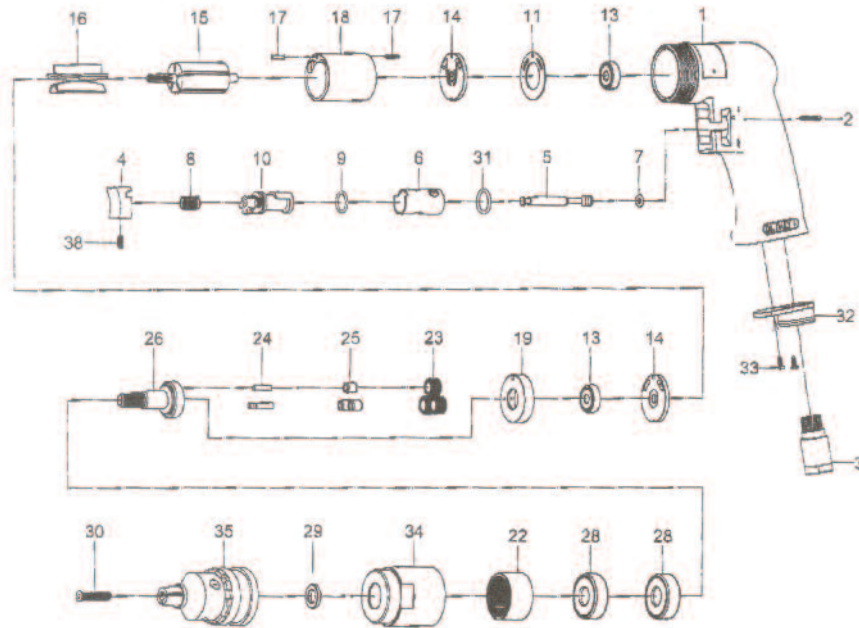


T-7768R 3/8" Super Duty Drill 1800 RPM



OILING INSTRUCTIONS:

OIL AFTER EACH USE WITH 1 OR 2 TABLE-SPOONS OF AIRTOOL OIL THROUGH THE AIR INLET. RUN FOR ONE SECOND TO COAT ALL INTERNAL PARTS.

USE 90 PSI MAXIMUM

Ref.#	Part #	Description	Qty.
1	7768R01	Housing	1
1A	7768R01A	Complete Housing	1
2	7768R02	Pin	1
3	7768R03	Air Inlet	1
4	7768R04	Trigger	1
5	7768R05	Valve Stem	1
6	7768R06	Reverse Bushing	1
7	7768R07	"O" Ring	1
8	7768R08	Valve Spring	1
9	7768R09	"O" Ring	1
10	7768R10	Reverse Lever	1
11	7768R11	Motor Gasket	1
13	7768R13	Bearing	2
14	7768R14	End Plate	2
15	7768R15	Rotor	1
16	7768R16	Rotor Blade(5 per set)	1 set
17	7768R17	Pin	2
18	7768R18	Cylinder	1
19	7768R19	Spacer	1
22	7768R22	Internal Gear	1
23	7768R23	Planet Gear	3
24	7768R24	Pin	3

Ref.#	Part #	Description	Qty.
25	7768R25	Bushing	3
26	7768R26	Work Spindle	1
28	7768R28	Bearing	2
29	7768R29	Washer	1
30	7768R30	Screw	1
31	7768R31	"O" Ring	1
32	7768R32	Exhaust Diffuser	1
33	7768R33	Screw	2
34	7768R34	Gear Housing	1
35	7768R41BA-A	Drill Chuck	1
36	7768R41BA-B	Drill Chuck Key (not shown)	1
38	7768R38	Set Screw	1

505 N. Railroad Ave.
P.O. Box 1117
Boynton Beach, Florida 33435

SEE OUR CATALOG
at
www.taylorpneumatic.com

PH. 561-732-1111
FAX 561-731-4412
Toll Free 800-805-8665

11/08 TPTCDPT
all rights reserved
COPYRIGHT 2008
final