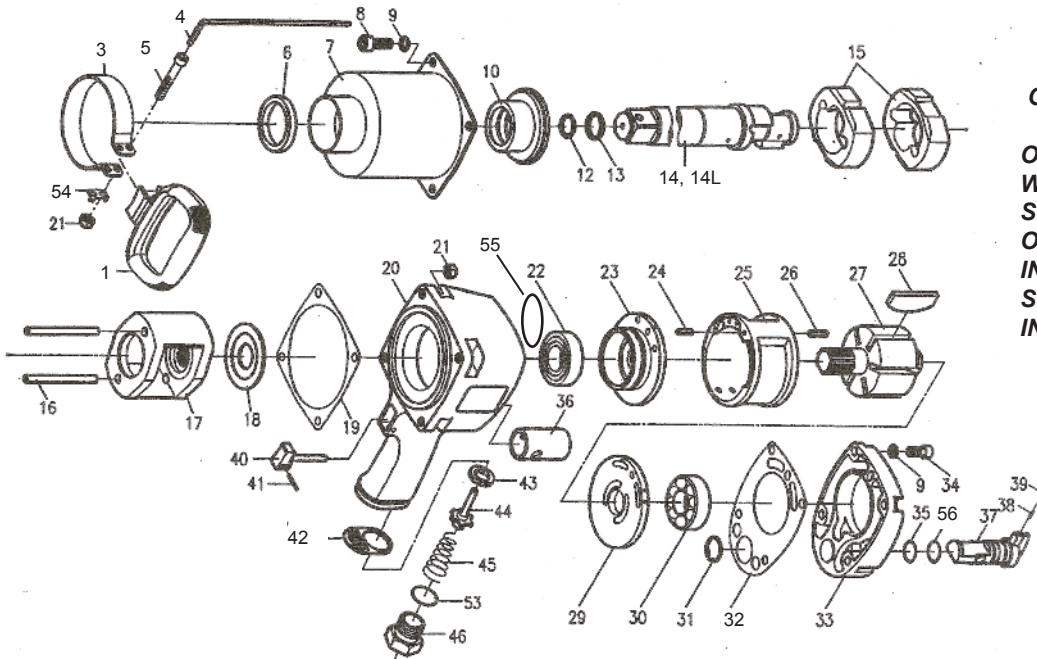


T-7796AN 1" Super Duty T-7796AN-6 Impact Wrench



OILING INSTRUCTIONS:

OIL AFTER EACH USE WITH 4 OR 5 TABLESPOONS OF AIRTOOL OIL THROUGH THE AIR INLET. RUN FOR ONE SECOND TO COAT ALL INTERNAL PARTS.

USE 90 PSI MAXIMUM

Ref.#	Part #	Description	Qty.	Ref.#	Part #	Description	Qty.
1	7796A01	Handle	1	28	7796A28	Rotor Blade (6 per set)	1 set
3	7796A03	Clamp	1	29	7796A29	Rear End Plate	1
4	7796A04	Hex Wrench	1	30	7796A30	Bearing	1
5	7796A05	Cap Screw	2	31	7796A31	Snap Ring	1
6	7796A06	Oil Seal	1	32	7796A32	Gasket	1
7	7796A07	Hammer Case	1	33	7796A33	Cover	1
8	7796A08	Cap Screw	4	34	7796A34	Cap Screw	4
9	7796A09	Washer	8	35	7796A35	"O"-Ring	2
10	7796A10	Bushing	1	36	7796A36	Valve Sleeve (comes w/#20)	1
12	7796A12	"O"-Ring	1	37	7796A37	Reverse Valve	1
13	7796A13	Anvil Collar	1	38	7796A38	Spring	1
14	7796AN14	2" Anvil	1	39	7796A39	Ball	1
14L	7796AN14L	8" Anvil	1	40	7796A40	Trigger	1
15	7796AN15	Hammer	2	41	7796A41	Spring Pin	1
16	7796A16	Hammer Pin	2	42	7796A42	Exhaust Deflector	1
17	7796AN17	Hammer Cage	1	43	7796A43	Bushing	1
18	7796A18	Washer	1	44	7796A44	Valve Stem	1
19	7796A19	Gasket	1	45	7796A45	Spring	1
20	7796A20	Motor Housing (comes w/#36)	1	46	7796A46	Air Inlet	1
21	7796A21	Lock Nut	6	53	7796A53	"O"-Ring	1
22	7796A22	Bearing	1	54	7796A54	Washer	1
23	7796A23	Front End Plate	1	55	7796AN55	"O" Ring	1
24	7796A24	Spring Pin	1	56	7796AN56	"O" Ring	1
25	7796A25	Cylinder	1				
26	7796A26	Spring Pin	1				
27	7796A27	Rotor	1				

505 N. Railroad Ave.
P.O. Box 1117
Boynton Beach, Florida 33435

SEE OUR CATALOG
at
www.taylorpneumatic.com

PH. 561-732-1111
FAX 561-731-4412
Toll Free 800-805-8665

08/10 TPTCDPT
all rights reserved
COPYRIGHT 2010
final