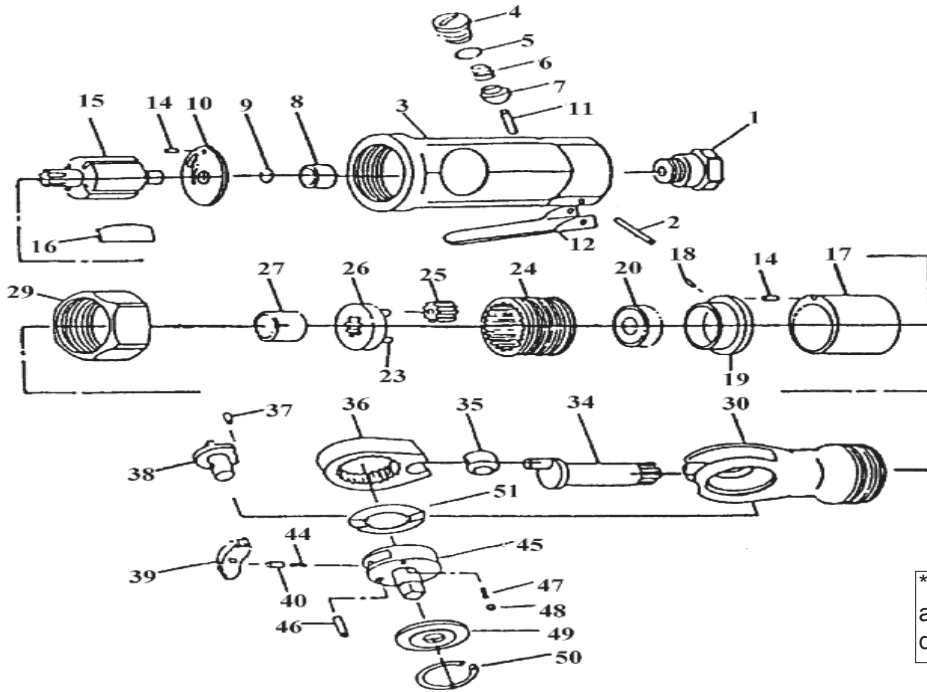


T-7825 1/4" Ratchet Wrench
T-7826 3/8" Ratchet Wrench



OILING INSTRUCTIONS:

OIL AFTER EACH USE WITH 1 OR 2 TABLESPOONS OF AIRTOOL OIL THROUGH THE AIR INLET. RUN FOR ONE SECOND TO COAT ALL INTERNAL PARTS.

*Always keep ratchet head clean & away from sand and dirt. Failure to do so may void the warranty.

USE 90 PSI MAXIMUM

Ref.#	Part #	Description	Qty.
1	782501	Air Inlet	1
2	782502	Lever Pin	1
3	782503	Motor Housing	1
4	782504	Valve Screw	1
5	782505	"O" Ring	1
6	782506	Valve Spring	1
7	782507	Throttle Valve	1
8	782508	Bearing	1
9	782509	Retainer	1
10	782510	Rear Plate	1
11	782511	Valve Pin	1
12	782512	Throttle Lever	1
14	782514	Pin	2
15	782515	Rotor	1
16	782516	Rotor Blade (4 per set)	1 set
17	782517	Cylinder	1
18	782518	Pin	1
19	782519	Front Plate	1
20	782520	Bearing	1
23	782523	Pin	3
24	782524	Internal Gear	1
25	782525	Idler Gear	3

Ref.#	Part #	Description	Qty.
26	782526	Idler Gear Plate	1
27	782527	Spacer	1
29	782529	Clamp Nut	1
30	782530	Ratchet Housing	1
34	782534	Crank Shaft	1
35	782535	Drive Bushing	1
36	782536	Yoke	1
37	782537	Pin	1
38	782538	Reverse Button	1
39	782539	Pawl	1
40	782540	Lock Pin	1
44	782544	Spring	1
45	782545	1/4" Anvil	1
	782645	3/8" Anvil	1
46	782546	Pin	1
47	782547	Spring	2
48	782548	Ball	2
49	782549	Thrust Washer	1
50	782550	Retaining Ring	1
51	782551	Washer	1

505 N. Railroad Ave.
P.O. Box 1117
Boynton Beach, Florida 33435

SEE OUR CATALOG
at
www.taylorpneumatic.com

PH. 561-732-1111
FAX 561-731-4412
Toll Free 800-805-8665