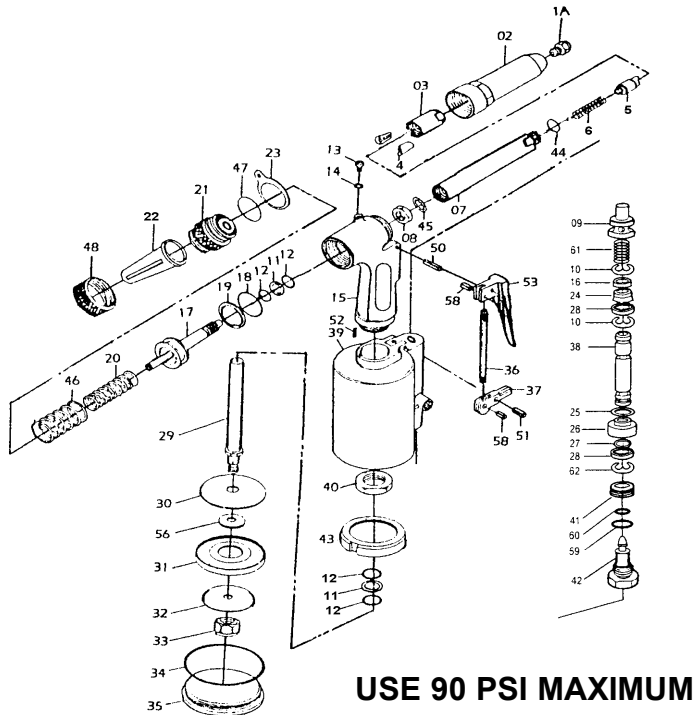


T-7892A

1/4" Heavy Duty

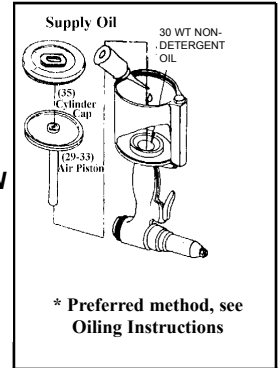
Long Nose Riveter

Taylor
Pneumatic Tool Company

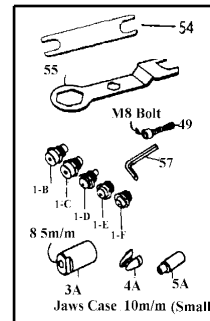


USE 90 PSI MAXIMUM

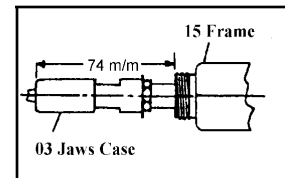
OILING INSTRUCTIONS:
OIL AFTER EACH USE WITH
1 TABLESPOON OF AIR-
TOOL OIL THROUGH THE
AIR INLET. PULL THE TRIG-
GER ONCE OR TWICE TO
COAT INTERNAL PARTS.
FOLLOW INSTRUCTIONS ON
BACK OF THIS SHEET TO
MAINTAIN FLUID LEVEL IN
HYDRAULIC PORTION OF
TOOL.



**Auxiliary Parts
(Included)**



Adjusting Length



Ref.#	Part #	Description	Qty.	Ref.#	Part #	Description	Qty.
1A	7892A01AN	1/4" Nosepiece	1	28	7892A28N	Ring Seal Washer	1
1B	7892A01BN	7/32" Nosepiece	1	29	7892A29N	Piston Rod	1
1C	7892A01CN	3/16" Nosepiece	1	30	7892A30N	Washer	1
1D	7892A01DN	5/32" Nosepiece	1	31	7892A31N	Cup Packing	1
1E	7892A01EN	1/8" Nosepiece	1	32	7892A32N	Cup Packing Washer	1
1F	7892A01FN	3/32" Nosepiece	1	33	7892A33N	Lock Nut	1
2	7892A02L	Frame Head	1	34	7892A34N	"C" Ring	1
3	7892A03N	Jaw Case (3/16"-1/4")	1	35	7892A35N	Cylinder Cap	1
3A	7892A03AN	Jaw Case (3/32"-5/32")	1	36	7892A36N	Trigger Rod	1
4	7892A04N	Jaws (3/16"-1/4")	2	37	7892A37N	Trigger Lever	1
4A	7892A04AN	Jaws (3/32"-5/32")	2	38	7892A38N	Valve Pusher	1
5	7892A05N	Jaw Pusher (3/16"-1/4")	1	39	7892A39N	Air Cylinder	1
5A	7892A05AN	Jaw Pusher (3/32"-5/32")	1	40	7892A40N	Frame Locknut	1
6	7892A06N	Jaw Case Spring	1	41	7892A41N	Nut	1
7	7892A07L	Jaw Case Back	1	42	7892A42N	Joint Nut	1
8	7892A08N	Case Lock Nut	1	43	7892A43N	Rubber Cushion	1
9	7892A09N	Valve Pusher	1	44	7892A44N	Jaw Case "O" Ring	1
10	7892A10N	"C" Ring	3	45	7892A45N	Washer Ring	1
11	7892A11N	Back Up Ring	2	46	7892A46N	Return Spring	1
12	7892A12N	"O" Ring	4	47	7892A47N	Frame Cap "O" Ring	1
13	7892A13N	Plug	1	48	7892A48N	Catcher Nut	1
14	7892A14N	Packing	1	49	7892A49N	Bolt Plug	1
15	7892A15N	Frame	1	50	7892A50N	Pin	1
16	7892A16N	Valve Ring Seal	1	51	7892A51N	Level Pin	1
17	7892A17N	Piston	1	52	7892A52N	Pin	1
18	7892A18N	"O" Ring	1	53	7892A53N	Trigger	1
19	7892A19N	Backup Ring	1	54	7892A54N	Wrench	1
20	7892A20N	Spring	1	55	7892A55N	Wrench	1
21	7892A21N	Frame Cap	1	56	7892A56N	Piston Washer	1
22	7892A22N	Catcher	1	57	7892A57N	Hex Wrench	1
23	7892A23N	Hanger Clip	1	58	7892A58N	Trigger Pin	2
24	7892A24N	Trigger Ring	1	59	7892A59N	Spring	1
25	7892A25N	"O" Ring	1	60	7892A60N	Ball	1
26	7892A26N	Valve Seal	1				
27	7892A27N	"O" Ring	1				

505 N. Railroad Ave.
P.O. Box 1117
Boynton Beach, Florida 33435

SEE OUR CATALOG
at
www.taylorpneumatic.com

PH. 561-732-1111
FAX 561-731-4412
Toll Free 800-805-8665

12/06 TPTCDPT
all rights reserved
COPYRIGHT 2006



505 N. Railroad Avenue
P.O. Box 1117
Boynton Beach, FL 33425
Ph. 561-732-1111 Fax. 561-731-4412

OPERATING INSTRUCTIONS FOR THE T-7892A RIVET TOOL

1. **Maintain fluid levels - Use 30 wt. oil.** There are two methods of adding oil to the T-7892A.
 - A. **PREFERRED WAY:** Mount tool in vice with bottom cap # 35 up. Remove #35 with wrench #55. Remove entire piston (part #29, 30, 56, 31, 32, 33) as an assembly, by grasping #33 with a pair of pliers and pulling straight up. After the piston is removed fill with 30 weight non detergent oil to top of #40 nut (no oil should be in the #39 cylinder). Replace #35 Cap, and remove tool from the vice. With the tool in the upright position, remove #13 screw and excess oil will be vented. Wipe away excess oil, and replace #13. The total amount of oil should be 2-1/2 tablespoons.
 - B. Mount the T-7892A in a vice in the upright position, using cardboard or cloth to prevent marring the finish. Remove #13 oil fill screw. Remove #01 A, B, C, D, E, F or nosepiece. Screw in #49 bolt plug with #57 hex wrench to open the oil passage. Gradually add oil through the vent opening. Replace the fill screw #13. Remove #49 and replace with #01 nosepiece. Remove fill screw #13 to vent excess oil. (Too much oil in the system can cause a failure of the housing).
A few drops of 30 wt oil or air tool oil through the air inlet every 10 to 15 minutes is recommended if no air line oiler is in place.
2. **Adjusting the stroke - Remove #02 by using #55 wrench.** For maximum stroke, loosen nut #08 and thread the nut all the way onto #17 piston. Then loosen #03 and #07 and thread them all the way to #08. Hold #08 with a wrench and tighten #3. For a shorter stroke, adjust #08 so that it is away from the shoulder of #17 by two or more threads, depending on how short you want the stroke to be.
3. **Always use the correct size nosepiece for the rivet you are using.** It is a good idea to use a silicone oil such as WD 40 to lubricate the jaws #04 when pulling quantities of rivets, as there may be a build up of metal particles that could cause mandrels to stick in the jaws.
4. **Air pressure - The maximum pressure should be 90 PSI.** A higher pressure could cause damage to your tool. Using the lowest pressure possible for your application will extend the life of your tool dramatically.
5. **As with all tools, make sure that all parts are tight from time to time, as vibration from use may loosen components.**
6. **Mandrels - The T-7892A comes complete with the #22 mandrel catcher.** Once a rivet has been popped, and the next rivet is mounted in the nosepiece, the last mandrel will slide into the #22. To remove mandrels, turn the tool upside down and they will fall out of the slot in #22, or remove #22 completely and empty.