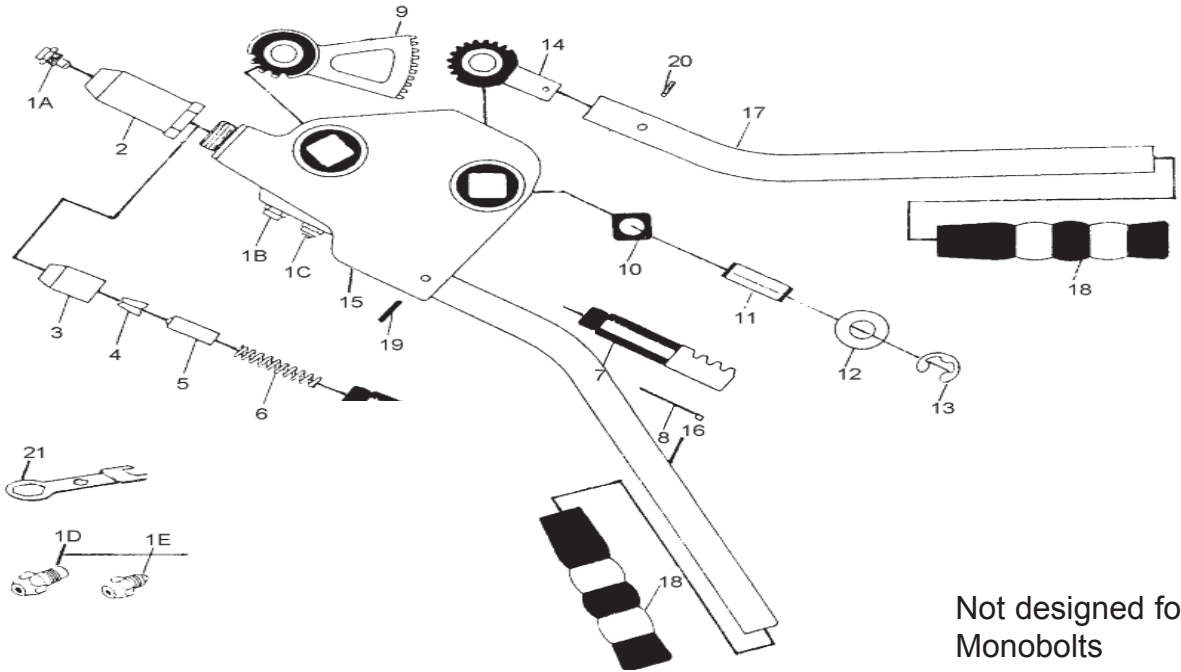


# T- 9010

## 1/4" Hand Riveter



Not designed for  
Monobolts

### USE 90 PSI MAXIMUM

Ref.#	Part #	Description	Qty.
1A	901001A	1/4" Nose	1
1B	901001B	Klik-Split Nose	1
1C	901001C	3/16" Nose	1
1D	901001D	5/32" Nose	1
1E	901001E	1/8" Nose	1
2	901002	Frame Head	1
3	901003	Jaw Case	1
4	901004	Jaws	2
5	901005	Jaw Pusher	1
6	901006	Spring	1
7	901007	Gear Rack	1
8	901008	Bearing Plate	1
9	901009	Gear	1

Ref.#	Part #	Description	Qty.
10	901010	Bearing	4
11	901011	Pin	2
12	901012	Washer	4
13	901013	"E" Ring	4
14	901014	Gear Rod	1
15	901015	Housing	1
16	901016	Lower Handle	1
17	901017	Upper Handle	1
18	901018	Grip	2
19	901019	Lower Pin	1
20	901020	Upper Pin	1
21	901021	Wrench	1

505 N. Railroad Ave.  
P.O. Box 1117  
Boynton Beach, Florida 33435

**SEE OUR CATALOG**  
at  
[www.taylorpneumatic.com](http://www.taylorpneumatic.com)

PH. 561-732-1111  
FAX 561-731-4412  
Toll Free 800-805-8665

01/07 TPTCDPT  
all rights reserved  
COPYRIGHT 2006