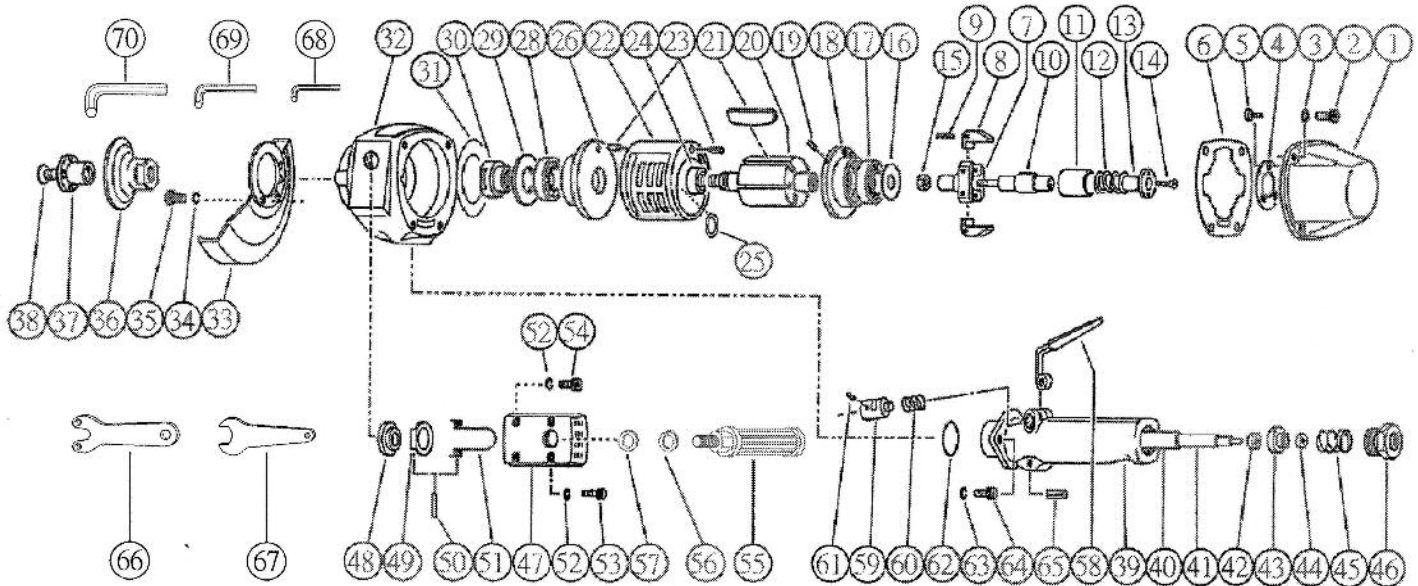


T-9600

9" Vertical Grinder

5,900 RPM



OILING INSTRUCTIONS:

OIL AFTER EACH USE WITH 3 OR 4 TABLESPOONS OF AIRTOOL OIL THROUGH THE AIR INLET. RUN FOR ONE SECOND TO COAT ALL INTERNAL PARTS.

USE 90 PSI MAXIMUM

Ref.#	Part #	Description	Qty.
1	960001	Housing	1
2	960002	Hex Bolt	4
3	960003	Spring Washer	4
4	960004	Washer	1
5	960005	Screw	3
6	960006	Packing	1
7	960007	Governor Cage	1
8	960008	Weight	2
9	960009	Roll Pin	2
10	960010	Shaft	1
11	960011	Valve	1
12	960012	Valve Spring	1
13	960013	Valve Spring Holder	1
14	960014	Screw	1
15	960015	"U" Nut	1
16	960016	Cover	1
17	960017	Bearing	1
18	960018	Upper Plate	1
19	960019	Roll Pin	1
20	960020	Rotor	1
21	960021	Rotor Blade (Set of 5)	1 set
22	960022	Cylinder	1
23	960023	Roll Pin	2
24	960024	Adjusting Collar	1
25	960025	Adjusting Washer	1
26	960026	Lower Cylinder Plate	1
28	960028	Bearing	1
29	960029	Bearing Spacer	1
30	960030	Rotor Nut	1
31	960031	Adjusting Washer	1
32	960032	Housing	1
33	960033	Wheel Guard	1
34	960034	Spring Washer	4
35	960035	Hex Bolt	4
36	960036	Wheel Flange	1

Ref.#	Part #	Description	Qty.
37	960037	Wheel Flange	1
38	960038	Screw	1
39	960039	Throttle Valve Body	1
40	960040	Throttle Valve Rod Bushing	1
41	960041	Throttle Valve Rod	1
42	960042	Throttle Valve	1
43	960043	Throttle Valve Washer	1
44	960044	Sub Throttle Valve	1
45	960045	Throttle Valve Spring	1
46	960046	Inlet Bushing	1
47	960047	Exhaust Cover	1
48	960048	Exhaust Valve	1
49	960049	Muffler Plate	1
50	960050	Roll Pin	1
51	960051	Muffler Spring	1
52	960052	Spring Washer	4
53	960053	Hex Bolt	2
54	960054	Hex Bolt	2
55	960055	Dead Handle	1
56	960056	Spring Washer	1
57	960057	Washer	1
58	960058	Throttle Valve Lever	1
59	960059	Lock Key	1
60	960060	Lock Spring	1
61	960061	Bolt	1
62	960062	"O" Ring	1
63	960063	Spring Washer	2
64	960064	Hex Bolt	2
65	960065	Pin	1
66	960066	Spanner Wrench	1
67	960067	Wrench	1
68	960068	Allen Wrench	1
69	960069	Allen Wrench	1
70	960070	Allen Wrench	1

505 N. Railroad Ave.
P.O. Box 1117
Boynton Beach, Florida 33435

SEE OUR CATALOG
at
www.taylorpneumatic.com

PH. 561-732-1111
FAX 561-731-4412
Toll Free 800-805-8665

06/13 TPTCDPT
all rights reserved
COPYRIGHT 2013
final