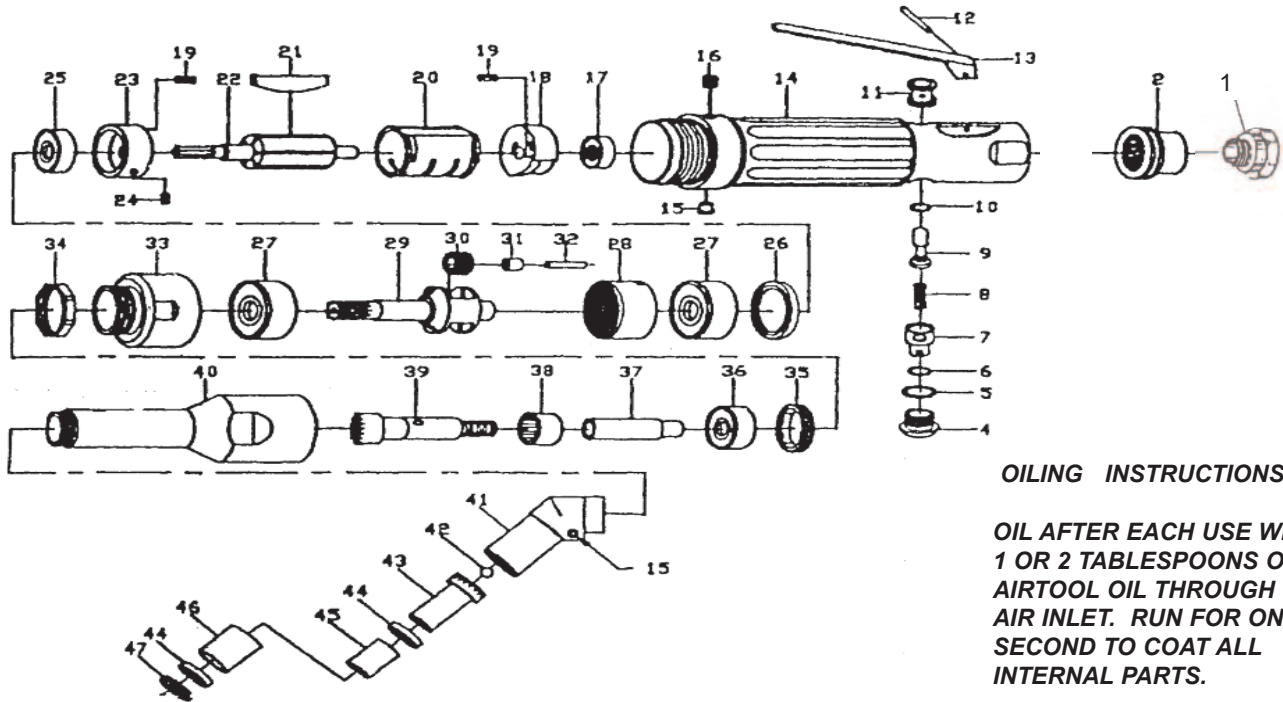


T-9751 45 Degree Angle Drill



OILING INSTRUCTIONS:

OIL AFTER EACH USE WITH 1 OR 2 TABLESPOONS OF AIRTOOL OIL THROUGH THE AIR INLET. RUN FOR ONE SECOND TO COAT ALL INTERNAL PARTS.

USE 90 PSI MAXIMUM

Ref.#	Part #	Description	Qty.
1	975101	Air Inlet	1
2	975102	Muffler	1
4	975104	Plug	1
5	975105	"O" Ring	1
6	975106	"O" Ring	1
7	975107	Regulator	1
8	975108	Spring	1
9	975109	Valve Stem	1
10	975110	"O" Ring	1
11	975111	Valve Bushing	1
12	975112	Pin	1
13	975113	Throttle Lever	1
14	975114	Motor Housing	1
15	975115	Grease Fitting	2
16	975116	Set Screw	1
17	975117	Bearing	1
18	975118	Rear End Plate	1
19	975119	Pin	2
20	975120	Cylinder	1
21	975121	Vanes	5
22	975122	Rotor	1
23	975123	Front End Plate	1
24	975124	Pin	1

Ref.#	Part #	Description	Qty.
25	975125	Bearing	1
26	975126	Spacer	1
27	975127	Bearing	2
28	975128	Ring Gear	1
29	975129	Carrier	1
30	975130	Idler Gear	2
31	975131	Bearing	2
32	975132	Pin	2
33	975133	Adapter	1
34	975134	Lock Ring	1
35	975135	Lock Ring	1
36	975136	Bearing	1
37	975137	Adapter	1
38	975138	Bearing	1
39	975139	Bevel	1
40	975140	Angle Housing	1
41	975141	Angle Head	1
42	975142	Steel Ball	1
43	975143	Spindle	1
44	975144	Bearing	2
45	975145	Spacer	1
46	975146	Spacer	1
47	975147	Lock Ring	1

505 N. Railroad Ave.
P.O. Box 1117
Boynton Beach, Florida 33435

SEE OUR CATALOG
at
www.taylorpneumatic.com

PH. 561-732-1111
FAX 561-731-4412
Toll Free 800-805-8665

2/07 TPTCDPT
all rights reserved
COPYRIGHT 2007