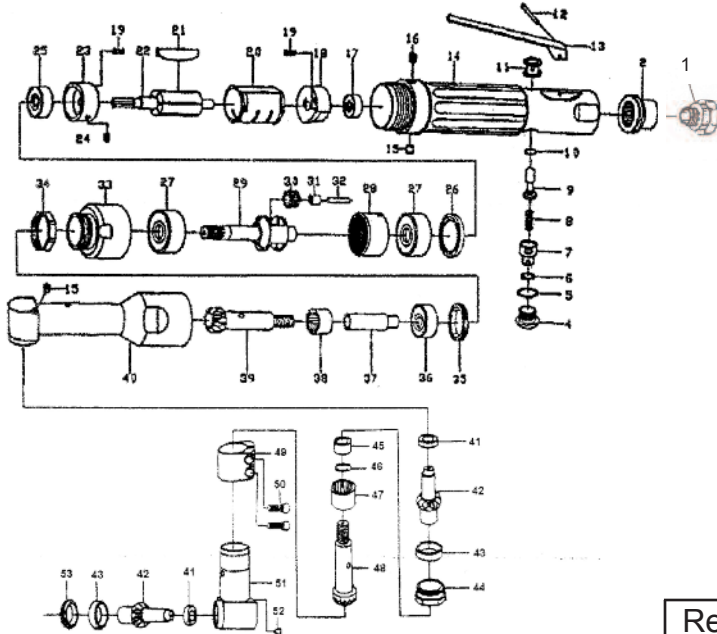


T-9753

360 Degree Angle Drill



OILING INSTRUCTIONS:

OIL AFTER EACH USE WITH 1 OR 2 TABLESPOONS OF AIRTOOL OIL THROUGH THE AIR INLET. RUN FOR ONE SECOND TO COAT ALL INTERNAL PARTS.

USE 90 PSI MAXIMUM

Ref.#	Part #	Description	Qty.
1	975001	Air Inlet	1
2	975002	Muffler	1
4	975004	Plug	1
5	975005	"O" Ring	1
6	975006	"O" Ring	1
7	975007	Regulator	1
8	975008	Spring	1
9	975009	Valve Stem	1
10	975010	"O" Ring	1
11	975011	Valve Bushing	1
12	975012	Pin	1
13	975013	Throttle Lever	1
14	975014	Motor Housing	1
15	975015	Grease Fitting	1
16	975016	Set Screw	2
17	975017	Bearing	1
18	975018	Rear End Plate	1
19	975019	Pin	1
20	975020	Cylinder	2
21	975021	Vanes	1
22	975022	Rotor	5
			1

Ref.#	Part #	Description	Qty.
23	975323	Front End Plate	1
24	975324	Pin	1
25	975325	Bearing	1
26	975326	Spacer	1
27	975327	Bearing	2
28	975328	Ring Gear	1
29	975329	Carrier	1
30	975330	Idler Gear	2
31	975331	Bearing	2
32	975332	Pin	2
33	975333	Adapter	1
34	975334	Lock Ring	1
35	975335	Lock Ring	1
36	975336	Bearing	1
37	975337	Adapter	1
38	975338	Bearing	1
39	975339	Bevel Gear	1
40	975340	Angle Housing	1
41	975341	Bearing	1
42	975342	Geared Spindle	2
43	975343	Bearing	2
44	975344	Lock Ring	1
45	975345	Spacer	1
46	975346	Washer	1
47	975347	Needle Bearing	1
48	975348	Bevel Gear	1
49	975349	Clamp	1
50	975350	Screw	2
51	975351	Angle Housing	1
52	975352	Grease Fitting	1
53	975353	Lockring	1

505 N. Railroad Ave.
P.O. Box 1117
Boynton Beach, Florida 33435

SEE OUR CATALOG
at
www.taylorpneumatic.com

PH. 561-732-1111
FAX 561-731-4412
Toll Free 800-805-8665

01/07 TPTCDPT
all rights reserved
COPYRIGHT 2006