

# T-3000C C-TYPE Compression Riveter With Safety Backhead



**CAUTION -**

*All adjustments should be done with tool disconnected from the air supply.*

**RIVETING OPERATION -**

The maximum riveting force takes place at the end of the piston stroke. Make sure to start with a gap when the T-3000C is fully activated. This gap should be at least the length of the finished rivet. If, after squeezing the rivet, it is squeezed too little, add shims until the rivet is set to the correct size. Squeezing too little is preferable to over squeezing.

**DIMPLING OPERATION -**

Dimple dies should touch each other with no gap. Place the male die in the fixed part of the yoke and the female portion in the set holder that moves when activating the Riveter. Place the aluminum over the male set holder and actuate the Riveter quickly and at full throttle. This action will cause the dies to clap together and create a crisp clean dimple.

**CAUTION -**

Yokes may be permanently damaged if less than zero clearance is in the yoke. Yokes can be permanently bent or sprung. Double check every job.

**USE 90 PSI MAXIMUM**

Ref.#	Part #	Description	Qty.
1	3000C01	Yoke frame plate	2
2	02	Wedge guide plate	2
3	03	Roller thrust washer	4
4	04	Plate roller	2
5	05	Needle roller	40
6	06	Roller shaft	2
7	07	Outer race	1
8	08	Needle roller	25
9	09	Inner race	1
10	10	Bearing shaft	1
11	11	Set holder lever	1
12	12	Yoke bolt	2
13	13	Yoke bolt nut	2
14	14	Lever shaft screw	1
15	15	Lever shaft washer	1
16	16	Spacer block	1
17	17	Set screw	1
18	18	Guard	1
19	19	Guard screw	1
20	20	Cylinder	1
21	21	Lever shaft	1
22	22	Spacer block pin	1
23	23	Piston return spring	2
24	24	Piston return spring	2
25	25	Short "C" wedge	1
25	26	Wedge spacer	1
27	27	Wedge spacer rivet	1

Ref.#	Part #	Description	Qty.
28	3000C28	Piston fork	1
29	29	Piston	1
30	30	Piston leather	1
31	31	Piston leather plate	1
32	32	Piston rod nut	1
33	33	Cylinder head gasket	1
34	34	Cylinder head	1
35	35	Throttle valve bushing	1
36	36	"O" ring (brass bushing)	1
37	37	Spring	1
38	38	Lever arm	1
39	39	Screw	1
40	40	Allen cap screw	6
41	41	Throttle valve	1
42	42	"O" ring	1
43	43	Throttle valve spring	1
44	44	Swivel	1
45	45	"O" ring	1
46	46	"O" ring	1
47	47	Swivel nut	1
48	48	Elbow	1
49	49	Set holder	1
50	50	Set holder spring	1
51	51A	1.5" Yoke (optional)	
51B	51B	3" Yoke (standard)	1
51C	51C	2.5" Longeron Yoke (standard)	1
52	52	Throttle Lever	1

505 N. Railroad Ave.  
P.O. Box 1117  
Boynton Beach, Florida 33435

**SEE OUR CATALOG**  
at  
[www.taylorpneumatic.com](http://www.taylorpneumatic.com)

PH. 561-732-1111  
FAX 561-731-4412  
Toll Free 800-805-8665

# T-3000C C-TYPE Compression Riveter

With Safety Backhead



USE 90 PSI MAXIMUM Air Pressure

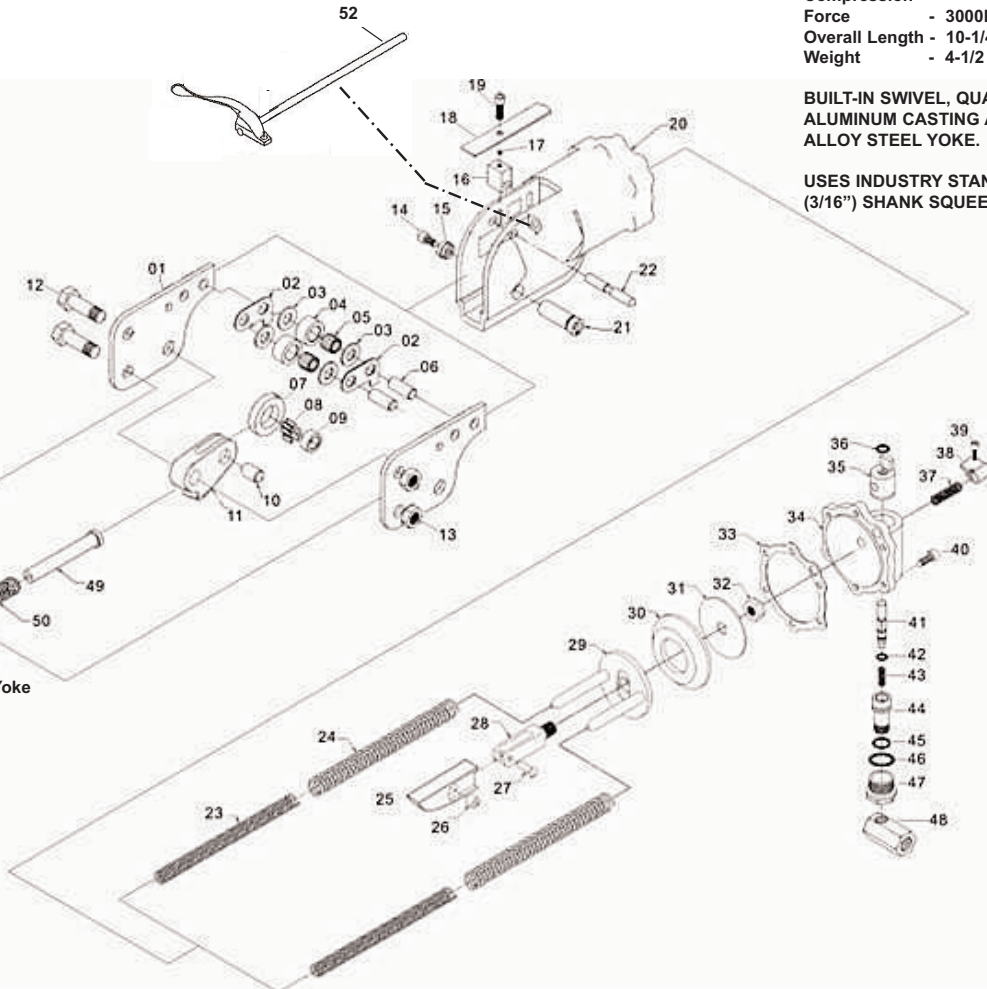
T-3000C51C  
"Longeron" Yoke  
Standard



T-3000C51B  
3" Yoke  
Standard



T-3000C51A - 1.5" Yoke  
Optional: Does not  
come with the tool



**T-3000C SPECIFICATIONS:**

- Rivet Capacity - ALUM: 1/8"
- STEEL: 3/32"
- Gap - 1-1/4"
- Compression Force - 3000lbs.
- Overall Length - 10-1/4"
- Weight - 4-1/2 lbs.

BUILT-IN SWIVEL, QUALITY ALUMINUM CASTING AND ALLOY STEEL YOKE.

USES INDUSTRY STANDARD .187 (3/16") SHANK SQUEEZE SETS

Clean dry air is a must for top performance. 90 psi at the tool is required. Excessive air pressure can cause tool damage. Use of a 3/8" hose is recommended.

Oiling daily before and after use will prolong tool life. Disconnect tool from air supply and

pour 1/2 oz. of airtool oil (like our T-8004) into the air inlet. Cycle the tool once or twice to coat internal parts.

**NOTE:** Move throttle lever #52 forward before actuating. This is a safety feature to prevent accidental starts. Return lever to original position to end cycle.

505 N. Railroad Ave.  
P.O. Box 1117  
Boynton Beach, Florida 33435

**SEE OUR CATALOG**  
at  
[www.taylorpneumatic.com](http://www.taylorpneumatic.com)

PH. 561-732-1111  
FAX 561-731-4412  
Toll Free 800-805-8665

02/09 TPTCDPT  
all rights reserved  
COPYRIGHT 2009  
final