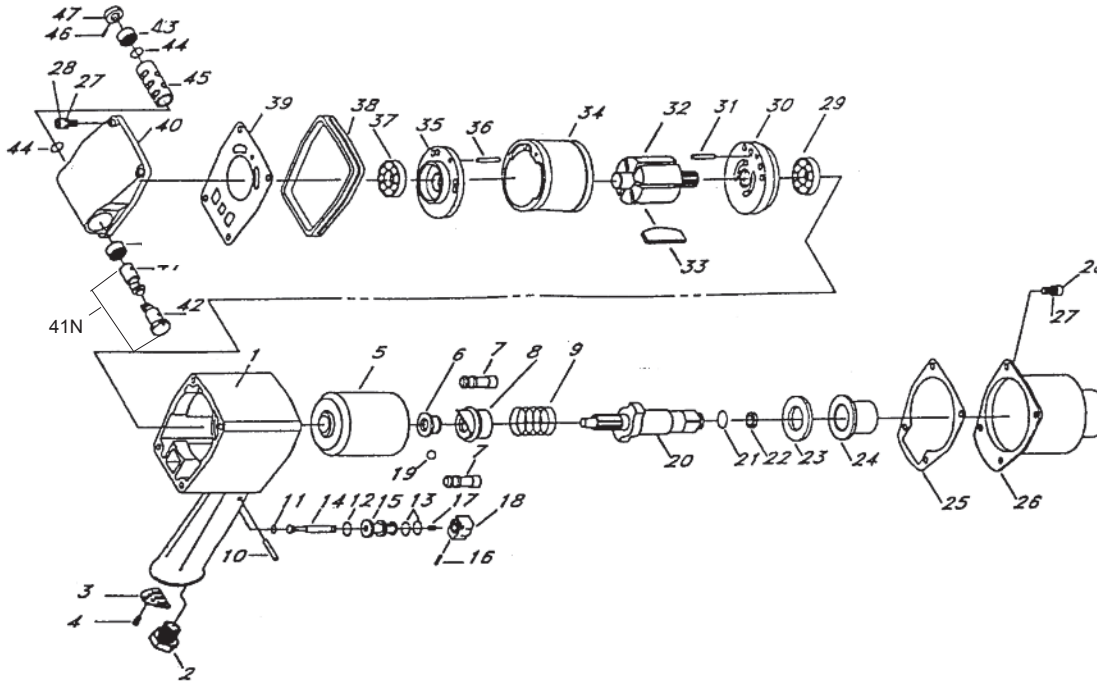


# T-7773 Heavy Duty 3/4" Impact



## OILING INSTRUCTIONS:

**OIL AFTER EACH USE WITH 1 OR 2 TABLE-SPoons OF AIRTOOL OIL THROUGH THE AIR INLET. RUN FOR ONE SECOND TO COAT ALL INTERNAL PARTS.**



## USE 90 PSI MAXIMUM

Ref.#	Part #	Description	Qty.
1	777301	Motor Housing	1
2	777302	Air Inlet	1
3	777303	Exhaust Cover	1
4	777304	Screw	1
5	777305	Hammer Cage	1
6	777306	Cam Ball Pilot	1
7	777307	Hammer Pin	2
8	777308	Cam	1
9	777309	Spring	1
10	777310	Roll Pin	1
11	777311	"O" Ring	1
12	777312	"O" Ring	1
13	777313	"O" Ring	2
14	777314	Valve Stem	1
15	777315	Valve Bushing	1
16	777316	Screw	1
17	777317	Valve Spring	1
18	777318	Throttle Lever	1
19	777319	Steel Ball	1
20	777320	Anvil	1
21	777321	"O" Ring	1
22	777322	Socket Ret. Ring	1
23	777323	Spacer	1
24	777324	Housing Bushing	1

Ref.#	Part #	Description	Qty.
25	777325	Gasket	1
26	777326	Front Housing	1
27	777327	Spring Washer	8
28	777328	Screw	8
29	777329	Bearing	1
30	777330	Front End Plate	1
31	777331	Roll Pin	1
32	777332	Rotor	1
33	777333	Rotor Blade(6 per set)	1 set
34	777334	Cylinder	1
35	777335	Rear End Plate	1
36	777336	Roll Pin	1
37	777337	Bearing	1
38	777338	Housing Band	1
39	777339	Gasket	1
40	777340	Head Cover Assembly	1
41N	777341N	Regulator	1
43	777343	Regulator Bushing	2
44	777344	"O" Ring	2
45	777345	Reverse Valve Bushing	1
46	777346	Roll Pin	1
47	777347	Reverse Valve Knob	1

505 N. Railroad Ave.  
P.O. Box 1117  
Boynton Beach, Florida 33435

**SEE OUR CATALOG**  
at  
[www.taylorpneumatic.com](http://www.taylorpneumatic.com)

PH. 561-732-1111  
FAX 561-731-4412  
Toll Free 800-805-8665

06/2013 TPTCDPT  
all rights reserved  
COPYRIGHT 2013  
final