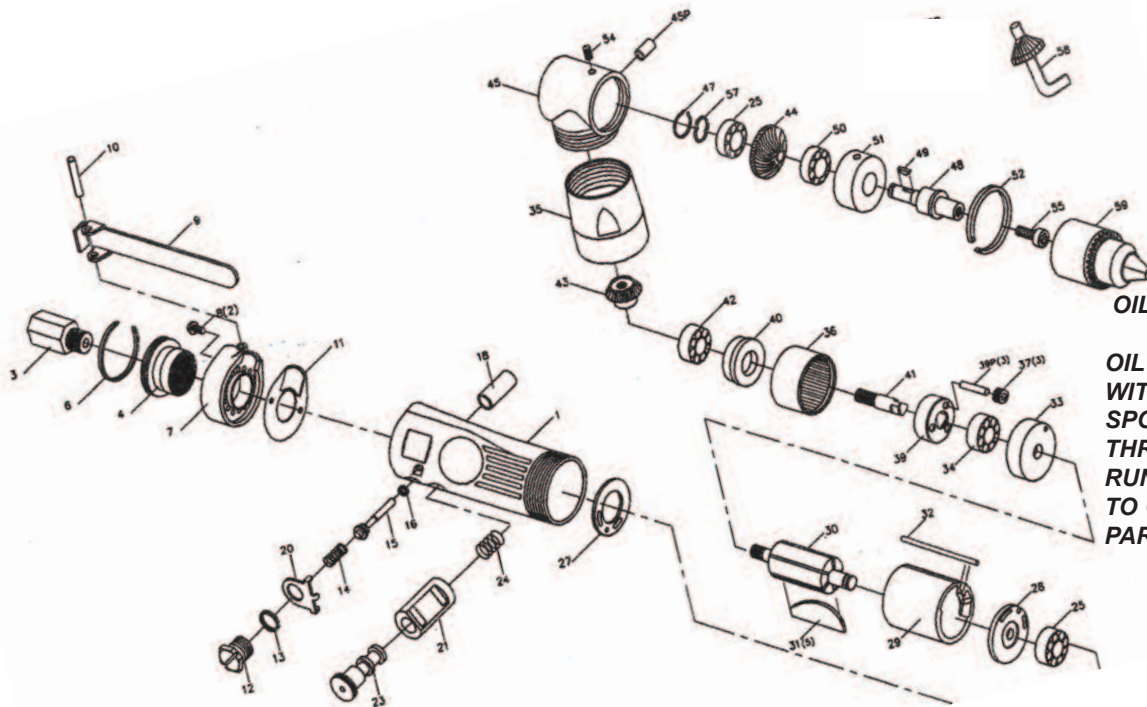


# T-7787RN

## 3/8" Reversible Angle Drill



### OILING INSTRUCTIONS:

**OIL AFTER EACH USE WITH 1 OR 2 TABLE-SPOONS OF AIRTOOL OIL THROUGH THE AIR INLET. RUN FOR ONE SECOND TO COAT ALL INTERNAL PARTS.**

### USE 90 PSI MAXIMUM

Ref.#	Part #	Description	Qty.
1	7787RN01	Motor Housing	1
3	7787RN03	Inlet Bushing	1
4	7787RN04	Deflector	1
6	7787RN06	Stop Ring	1
7	7787RN07	Housing Cap	1
8	7787RN08	Screw	2
9	7787RN09	Throttle Lever	1
10	7787RN10	Pin	1
11	7787RN11	Housing Gasket	1
12	7787RN12	Valve Screw	1
13	7787RN13	O-Ring	1
14	7787RN14	Valve Spring	1
15	7787RN15	Throttle Valve	1
16	7787RN16	O-Ring	1
18	7787RN18	Valve Bushing	1
20	7787RN20	Retainer	1
21	7787RN21	Bushing	1
23	7787RN23	Reverse Valve	1
24	7787RN24	Reverse Spring	1
25	7787RN25	Bearing	2
27	7787RN27	Motor Gasket	1
28	7787RN28	Rear End Plate	1
29	7787RN29	Cylinder	1
30	7787RN30	Rotor	1
31	7787RN31	Rotor Blade (5 per set)	1 set
32	7787RN32	Motor Pin	1

Ref.#	Part #	Description	Qty.
33	7787RN33	Front End Plate	1
34	7787RN34	Bearing	1
35	7787RN35	Lock Ring	1
36	7787RN36	Internal Gear	1
37	7787RN37	Planet Gear	3
39	7787RN39	Cage	1
39P	7787RN39P	Pin	3
40	7787RN40	Spacer	1
41	7787RN41	Gear Spindle	1
42	7787RN42	Bearing	1
43	7787RN43	Pinion	1
44	7787RN44	Gear	1
45	7787RN45	Angle Housing	1
45P	7787RN45P	Grease Fitting	1
47	7787RN47	Retaining Ring	1
48	7787RN48	Spindle	1
49	7787RN49	Key	1
50	7787RN50	Bearing	1
51	7787RN51	Bearing Case	1
52	7787RN52	Retaining Ring	1
54	7787RN54	Set Screw	1
55	7787RN55	Screw(goes in from front)	1
57	7787RN57	Wave Washer	1
58	T-7788-B	Chuck Key	1
59	T-7788-A	3/8" Drill Chuck	1
	T-7788-C	Chuck and Key	1

505 N. Railroad Ave.  
P.O. Box 1117  
Boynton Beach, Florida 33435

**SEE OUR CATALOG**  
at  
[www.taylorpneumatic.com](http://www.taylorpneumatic.com)

PH. 561-732-1111  
FAX 561-731-4412  
Toll Free 800-805-8665

11/10 TPTCDPT  
all rights reserved  
COPYRIGHT 2010  
final