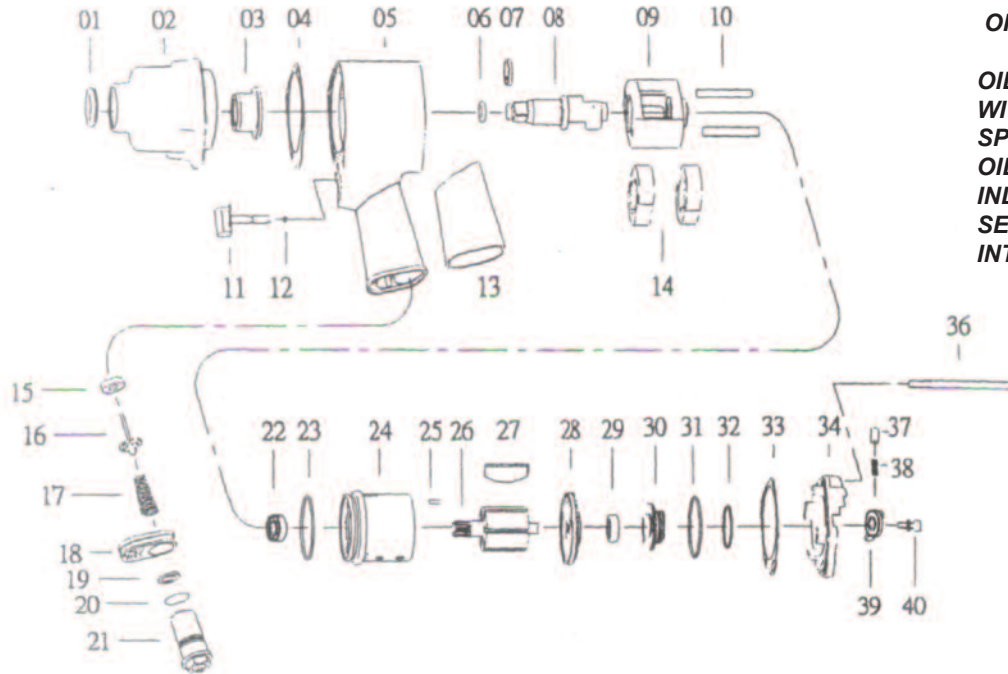


# T-8839 3/8"/39A 1/2" T-8839P 3/8" Pin Anvil Super Duty Impact Wrench



### OILING INSTRUCTIONS:

**OIL AFTER EACH USE WITH 2 OR 3 TABLE-SPOONS OF AIRTOOL OIL THROUGH THE AIR INLET. RUN FOR ONE SECOND TO COAT ALL INTERNAL PARTS.**

### USE 90 PSI MAXIMUM

Ref.#	Part #	Description	Qty.
1	883901	Oil Seal	1
2	883902	Hammer Case	1
3	883903	Bushing	1
4	883904	Front Gasket	1
5	883905	Motor Housing	1
6	883906	"O" Ring	1
7	883907	Anvil Collar	1
8	883908	Anvil 3/8"	1
8A	883908A	Anvil 1/2"	1
8B	883908B	Anvil 3/8" w/pin	1
9	883909	Hammer Cage	2
10	883910	Hammer Pin	1
11	883911	Trigger	1
12	883912	"O" Ring	1
13	883913	Grip	2
14	883914	Hammer Dog	1
15	883915	Retainer	1
16	883916	Valve Stem	1
17	883917	Spring	1
18	883918	Exhaust Deflector	1
19	883919	Washer	1
20	883920	"O" Ring	1
21	883921	Air Inlet	1
22	883922	Bearing	1
23	883923	"O" Ring	1
24	883924	Cylinder	1

Ref.#	Part #	Description	Qty.
26	883926	Rotor	1
27	883927	Vanes 6 per set	1set
28	883928	Rear End Plate	1
29	883929	Bearing	1
30	883930	Reverse Valve	1
31	883931	"O" Rng	1
32	883932	"O-Ring"	1
33	883933	Rear Gasket	1
34	883934	Rear Cover	1
36	883936	Screw	4
38	883938	Pin	1
39	883939	Reverse Lever	1
40	883940	Screw & Washer	1

505 N. Railroad Ave.  
P.O. Box 1117  
Boynton Beach, Florida 33435

**SEE OUR CATALOG**  
at  
[www.taylorpneumatic.com](http://www.taylorpneumatic.com)

PH. 561-732-1111  
FAX 561-731-4412  
Toll Free 800-805-8665