

T-8849 1/2" Impact Wrench

T-8849P 1/2" Impact

T-8849L Extended 1/2"



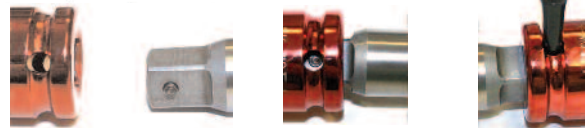
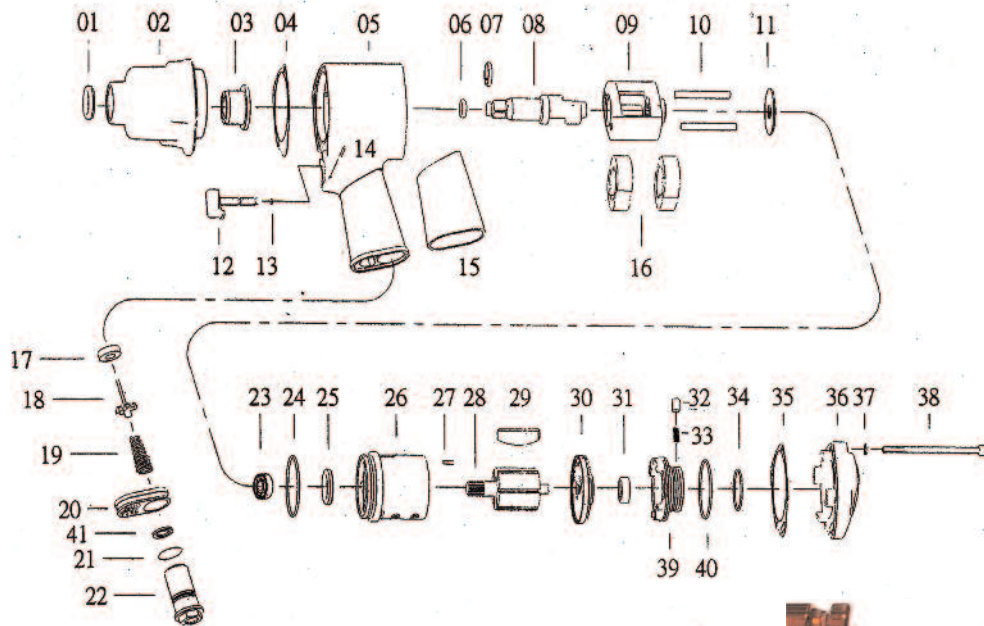
OILING INSTRUCTIONS:

OIL AFTER EACH USE WITH 2 OR 3 TABLE-SPOONS OF AIRTOOL OIL THROUGH THE AIR INLET. RUN FOR ONE SECOND TO COAT ALL

IMPORTANT INFORMATION FOR T-8849P

!!!WARNING!!!

Always use impact sockets that have a hole drilled in the side. Using the hole in the side may be the only way to remove the socket from the anvil. Insert a pointed object to push pin retainer down and remove socket.



1	884901	Oil Seal	1
2	884902	Hammer Case	1
3	884903	Bushing	1
4	884904	Front Gasket	1
5	884905	Motor Housing	1
6	884906	"O" Ring	1
7	884907	Anvil Collar	1
8	884908	Anvil	1
	884908A	Anvil, extended	1
	884908P	Anvil w/pin (shown in photos)	1
9	884909	Hammer Cage	1
10	884910	Hammer Pin	2
11	884911	Washer	1
12	884912	Trigger	1
13	884913	"O" Ring	1
14	884914	Spring Pin	1
15	884915	Grip	1
16	884916	Hammer Dog	2
17	884917	Valve Seat	1
18	884918	Valve Stem	1
19	884919	Spring	1
20	884920	Exhaust Deflector	1
21	884921	"O" Ring	1
22	884922	Air Inlet	1
23	884923	Bearing	1
24	884924	"O" Ring	1
	884925	Oil Seal	1

Ref.#	Part #		Qty.
	884926	Cylinder	1
26	884926	Cylinder	1
27	884927	Spring Pin	1
28	884928	Rotor	1
29	884929	Vanes (6 per set)	1 set
30	884930	Rear End Plate	1
31	884931	Bearing	1
32	884932	Pin	1
33	884933	Spring	1
34	884934	O-Ring	1
35	884935	Rear Gasket	1
36	884936	Rear Cover	1
38	884938	Bolt	4
39	884939	Reverse Lever	1
40	884940	O-Ring	1
41	884941	Washer	1
42	884942	Muffler	1

505 N. Railroad Ave.
P.O. Box 1117
Boynton Beach, Florida 33435

SEE OUR CATALOG
at
www.taylorpneumatic.com

PH. 561-732-1111
FAX 561-731-4412
Toll Free 800-805-8665

03/12 TPTCDPT
all rights reserved
COPYRIGHT 2012
final