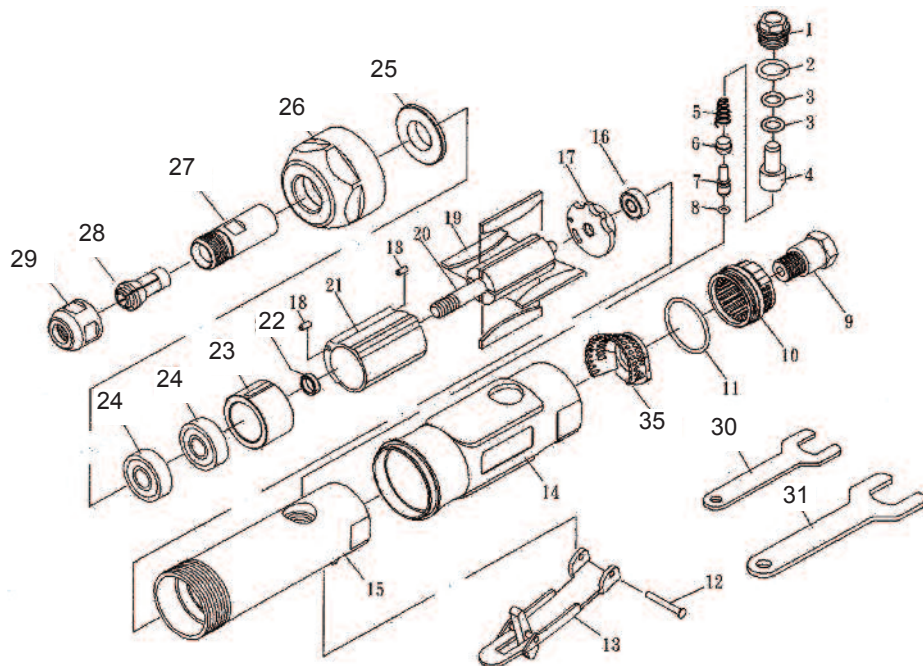


T-8857R

1/4" High Speed Die Grinder



OILING INSTRUCTIONS:

OIL AFTER EACH USE WITH 1 OR 2 TABLE-SPoons OF AIRTOOL OIL THROUGH THE AIR INLET. RUN FOR ONE SECOND TO COAT ALL INTERNAL PARTS.

USE 90 PSI MAXIMUM

Ref.#	Part #	Description	Qty.
1	8857R01	Screw	1
2	8857R02	"O"Ring	1
3	8857R03	"O"Ring	1
4	8857R04	Regulator	1
5	8857R05	Spring	1
6	8857R06	Bushing	1
7	8857R07	Valve Stem	1
8	8857R08	"O"Ring	1
9	8857R09	Air Inlet	1
10	8857R10	Exhaust Sleeve	1
11	8857R11	"O"Ring	1
12	8857R12	Pin	1
13	8857R13	Lever	1
14	8857R14	Rubber Sleeve	1
15	8857R15	Housing	1

Ref.#	Part #	Description	Qty.
16	8857R16	Bearing	1
17	8857R17	Rear End Plate	1
18	8857R18	Pin	2
19	8857R19	RotorBlades(4 per set)	1 set
20	8857R20	Rotor	1
21	8857R21	Cylinder	1
22	8857R22	Spacer	1
23	8857R23	Front End Plate	1
24	8857R24	Bearing	2
25	8857R25	Washer	1
26	8857R26	Clamp Nut	1
27	8857R27	Collet Casing	1
28	T-7504	1/4" Collet	1
28A	T-7508	1/8" Collet (optional)	
29	8857R29	Collet Nut	1
30	8857R30	Wrench 14mm	1
31	8857R31	Wrench 19mm	1
35	8857R35	Cone Muffler	1

505 N. Railroad Ave.
P.O. Box 1117
Boynton Beach, Florida 33435

SEE OUR CATALOG
at
www.taylorpneumatic.com

PH. 561-732-1111
FAX 561-731-4412
Toll Free 800-805-8665

06/09 TPTCDPT
all rights reserved
copyright 2009
final